

VOR/DME RIS 111.4 Chan 51	APP CRS 218°	Rwy Idg THRE Apt Elev	4351 744 757
---	------------------------	-----------------------------	---

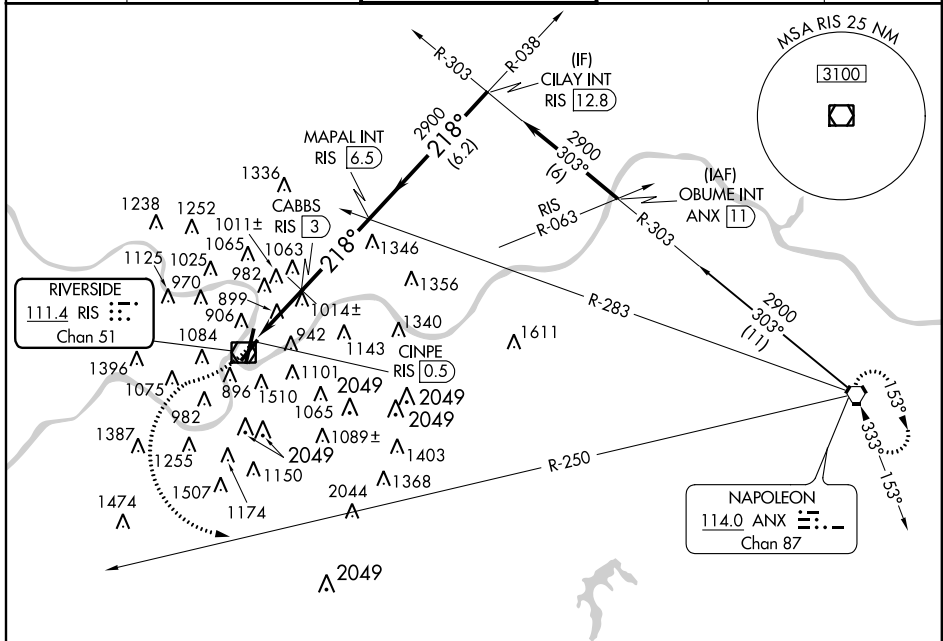
VOR RWY 21

KANSAS CITY/CHARLES B. WHEELER DOWNTOWN (MKC)

⚠ Circling NA east of Rwy 1-19. Helicopter visibility reduction below 1 SM not authorized. Circling Cat D NA Rwy 3.
⚠ Procedure NA at night.

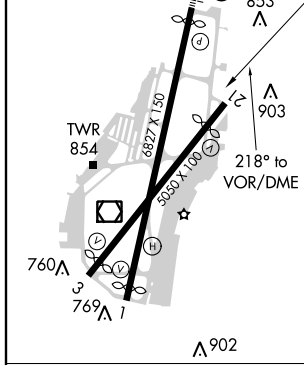
MISSED APPROACH: Climbing right turn to 3100 on heading 233° then left turn on ANX VORTAC R-250 to ANX VORTAC and hold.

ATIS 120.75	KANSAS CITY APP CON 118.4 294.7	DOWNTOWN TOWER 133.3 257.8	CLNC DEL 121.9	GND CON 121.9	122.8 ⓪
-----------------------	---	--------------------------------------	--------------------------	-------------------------	-----------------------



ELEV 757	D	THRE 744
----------	----------	----------

HIRL Rws 1-19 and 3-21
 REIL Rws 1 and 21
 RAIL Rwy 1



3100	hdg 233°	ANX R-250	MAPAL INT RIS 6.5	CILAY INT RIS 12.8
------	----------	-----------	-------------------	--------------------

VOR/DME	CABBS RIS 3	2900	218°	2900
CINPE RIS 0.5		1600	3.26°	TCH 57
		2.6 NM		3.5 NM
				6.2 NM

CATEGORY	A	B	C	D
S-21	1600-1 856 (900-1)	1600-1¼ 856 (900-1¼)	1600-2½ 856 (900-2½)	NA
CIRCLING	1600-1¼	843 (900-1¼)	1600-2½ 843 (900-2½)	1600-2¾ 843 (900-2¾)
CABBS FIX MINIMUMS				
S-21	1320-1	576 (600-1)	1320-1⅝ 576 (600-1⅝)	NA
CIRCLING	1380-1 623 (700-1)	1400-1 643 (700-1)	1400-1¾ 643 (700-1¾)	1400-2 643 (700-2)

FAF to MAP 6.1 NM					
Knots	60	90	120	150	180
Min:Sec	6:06	4:04	3:03	2:26	2:02

VOR RWY 21

NC-3, 07 FEB 2013 to 07 MAR 2013

NC-3, 07 FEB 2013 to 07 MAR 2013