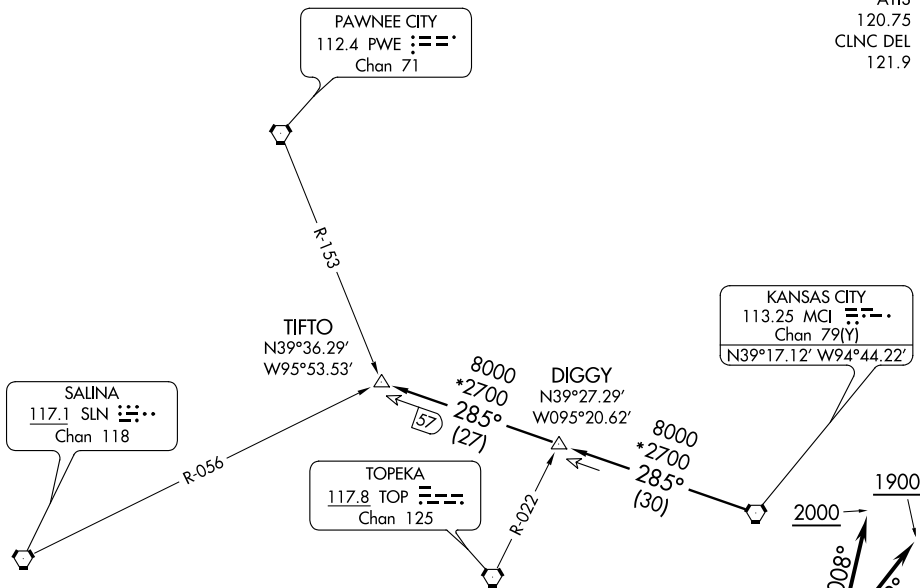


TIFTO THREE DEPARTURE

ATIS
120.75
CLNC DEL
121.9



NC-3, 07 FEB 2013 to 07 MAR 2013

NC-3, 07 FEB 2013 to 07 MAR 2013

NOTE: RADAR required.

TAKEOFF MINIMUMS:

Rwy 3: Standard.

Rwy 1: 400-2¼ or standard with minimum climb of 307' per NM to 1100.

Rwy 19: Standard with minimum climb of 400' per NM to 2500.

Rwy 21: Standard with minimum climb of 251' per NM to 1700.

(NOTES CONTINUED ON FOLLOWING PAGE)

NOTE: Chart not to scale



DEPARTURE ROUTE DESCRIPTION

TAKEOFF RUNWAY 1: Climb heading 008° to 2000, thence . . .

TAKEOFF RUNWAY 3: Climb heading 033° to 1900, thence . . .

TAKEOFF RUNWAY 19: Climbing right turn heading 215° to 2500, thence . . .

TAKEOFF RUNWAY 21: Climb heading 213° to 2300, thence . . .

. . . fly assigned heading and altitude for vector to appropriate route. Expect filed altitude 10 minutes after departure.

TIFTO TRANSITION (TIFTO3.TIFTO): From over MCI VORTAC via MCI R-285 to TIFTO INT.

TIFTO THREE DEPARTURE