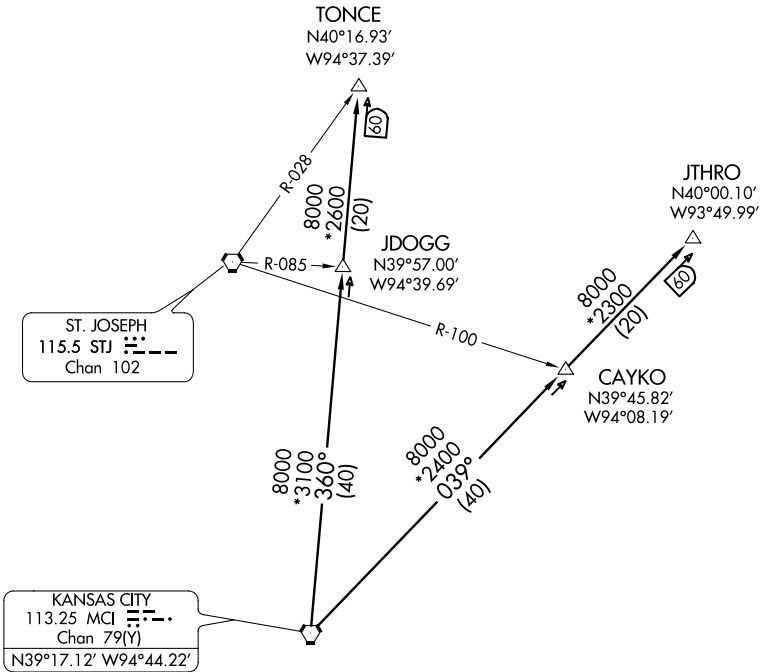


ATIS 120.75
CLNC DEL 121.9



TAKEOFF MINIMUMS

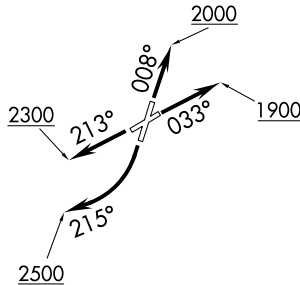
Rwy 1: 400-2¼ or standard with minimum climb of 307' per NM to 1100'.

Rwy 3: Standard.

Rwy 19: Standard with minimum climb of 400' per NM to 2500'.

Rwy 21: Standard with minimum climb of 251' per NM to 1700'.

NOTE: RADAR Required.



NOTE: Chart not to scale.



DEPARTURE ROUTE DESCRIPTION

TAKEOFF RWY 1: Climb heading 008° to 2000, thence. . .

TAKEOFF RWY 3: Climb heading 033° to 1900, thence. . .

TAKEOFF RWY 19: Climbing right turn heading 215° to 2500, thence. . .

TAKEOFF RWY 21: Climb heading 213° to 2300, thence. . .

. . . Fly assigned heading and altitude for vector to appropriate route.

Expect filed altitude 10 minutes after departure.

JTHRO TRANSITION (ROYAL4.JTHRO): From over MCI VORTAC on MCI R-039 to JTHRO INT.

TONCE TRANSITION (ROYAL4.TONCE): From over MCI VORTAC on MCI R-360 to TONCE INT.

(NARRATIVE ON FOLLOWING PAGE)

NC-3, 07 FEB 2013 to 07 MAR 2013

NC-3, 07 FEB 2013 to 07 MAR 2013