

(RACER4.MCI) 12320

RACER FOUR DEPARTURE

KANSAS CITY/CHARLES B. WHEELER DOWNTOWN (MKC)
SL-213 (FAA)

KANSAS CITY, MISSOURI

ATIS
128.375
CLNC DEL
135.7

TAKEOFF MINIMUMS

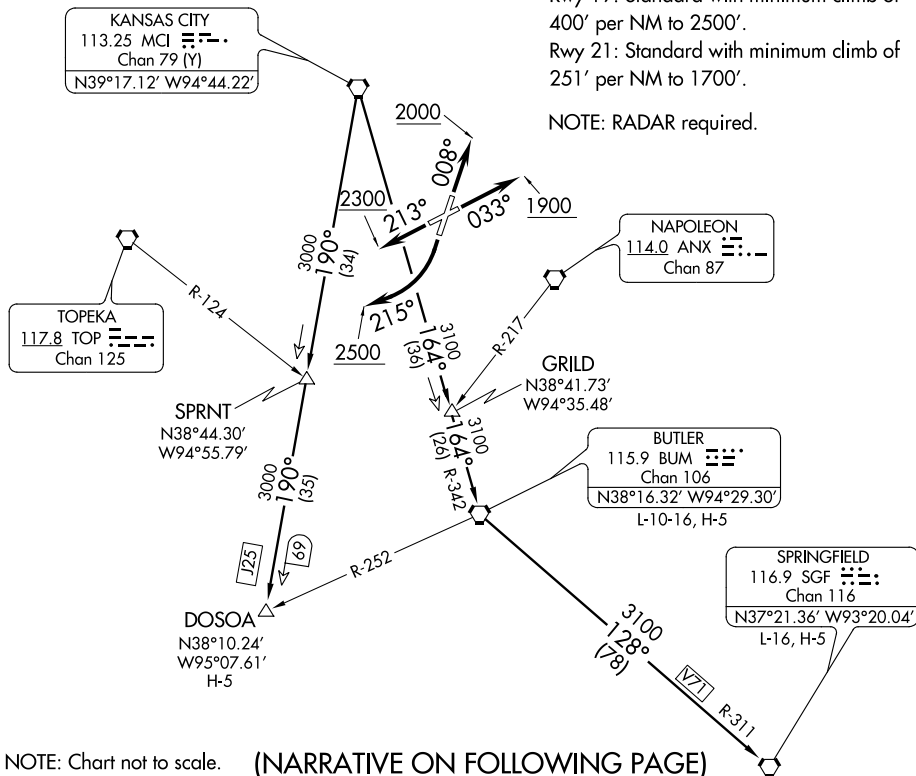
Rwy 1: 400-2¼ or standard with minimum climb of 307' per NM to 1100'.

Rwy 3: Standard.

Rwy 19: Standard with minimum climb of 400' per NM to 2500'.

Rwy 21: Standard with minimum climb of 251' per NM to 1700'.

NOTE: RADAR required.



NOTE: Chart not to scale. (NARRATIVE ON FOLLOWING PAGE)

DEPARTURE ROUTE DESCRIPTION

TAKEOFF RUNWAY 1: Climb heading 008° to 2000, then . . .

TAKEOFF RUNWAY 3: Climb heading 033° to 1900, then . . .

TAKEOFF RUNWAY 19: Climbing right turn heading 215° to 2500, then . . .

TAKEOFF RUNWAY 21: Climb heading 213° to 2300, then . . .

. . . fly assigned heading and altitude for vector to appropriate route. Expect filed altitude 10 minutes after departure.

BUTLER TRANSITION (RACER4.BUM): From over MCI VORTAC on MCI R-164 and BUM R-342 to BUM VORTAC.

DOSOA TRANSITION (RACER4.DOSOA): From over MCI VORTAC on MCI R-190 to DOSOA INT.

SPRINGFIELD TRANSITION (RACER4.SGF): From over MCI VORTAC on MCI R-164 and BUM R-342 to BUM VORTAC, then on BUM R-128 and SGF R-311 to SGF VORTAC.

RACER FOUR DEPARTURE

(RACER4.MCI) 12320

KANSAS CITY, MISSOURI

KANSAS CITY/CHARLES B. WHEELER DOWNTOWN (MKC)

NC-3, 07 FEB 2013 to 07 MAR 2013

NC-3, 07 FEB 2013 to 07 MAR 2013