

WAAS CH <b>50112</b> <b>W03A</b>	APP CRS <b>033°</b>	Rwy Idg <b>4270</b> THRE <b>743</b> Apt Elev <b>757</b>
--	------------------------	---

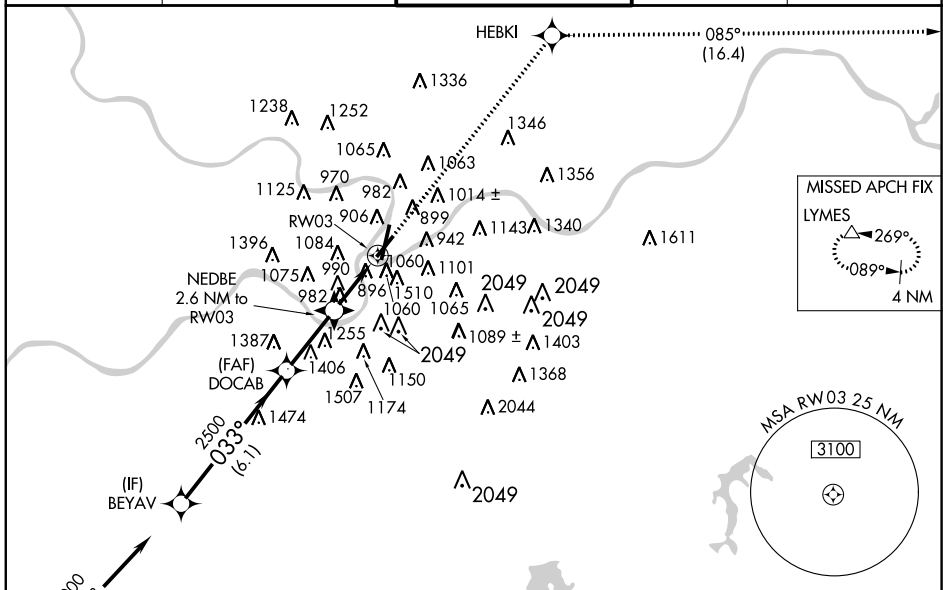
# RNAV (GPS) RWY 3

KANSAS CITY/CHARLES B. WHEELER DOWNTOWN (MKC)

**▽** For uncompensated Baro-VNAV systems, LNAV/VNAV NA below -16°C (4°F) or above 39°C (102°F). Circling NA east of Rwy 1-19. DME/DME RNP-0.3 NA. Visibility reduction by helicopters NA. Circling NA for Cat D to Rwy 3.

MISSED APPROACH: Climb to 3000 direct HEBKI and on track 085° track to LYMES and hold.

ATIS <b>120.75</b>	KANSAS CITY APP CON <b>118.4 294.7</b>	DOWNTOWN TOWER <b>133.3 257.8</b>	CLNC DEL (GCO) <b>121.9</b>	<b>122.8 0</b>
-----------------------	---	--------------------------------------	--------------------------------	----------------

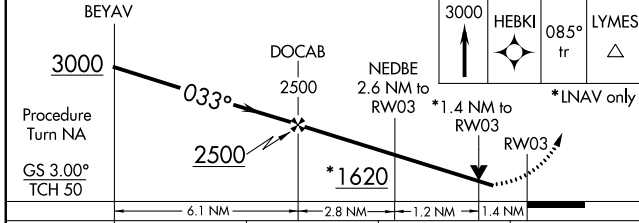


NC-3, 07 FEB 2013 to 07 MAR 2013

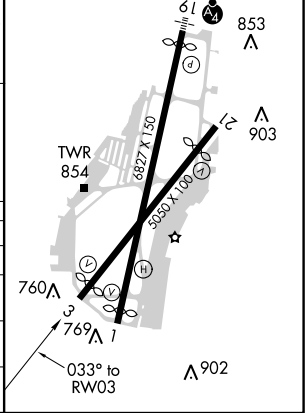
NC-3, 07 FEB 2013 to 07 MAR 2013

ELEV 757	<b>D</b> THRE 743
----------	-------------------

RAIL Rwy 1  
REIL Rws 1 and 21  
HIRL Rws 3-21 and 1-19



CATEGORY	A	B	C	D
LPV DA	943/40	200 (200-1)		NA
LNAV/VNAV DA	1410-2½	667 (700-2¼)		NA
LNAV MDA	1240/55	497 (500-1)	1240-1⅜ 497 (500-1⅜)	NA
CIRCLING	1380-1 623 (700-1)	1400-1 643 (700-1)	1400-1¾ 643 (700-1¾)	1400-2 643 (700-2)



# RNAV (GPS) RWY 3