

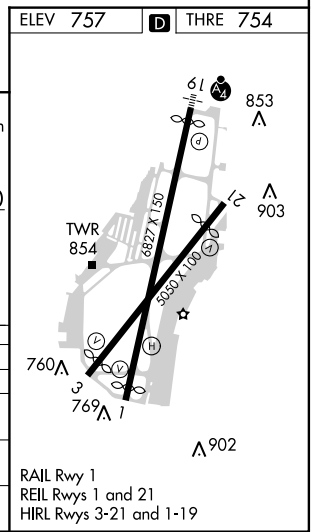
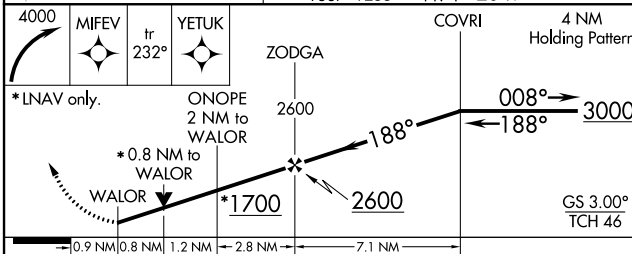
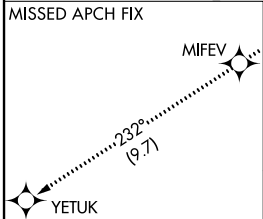
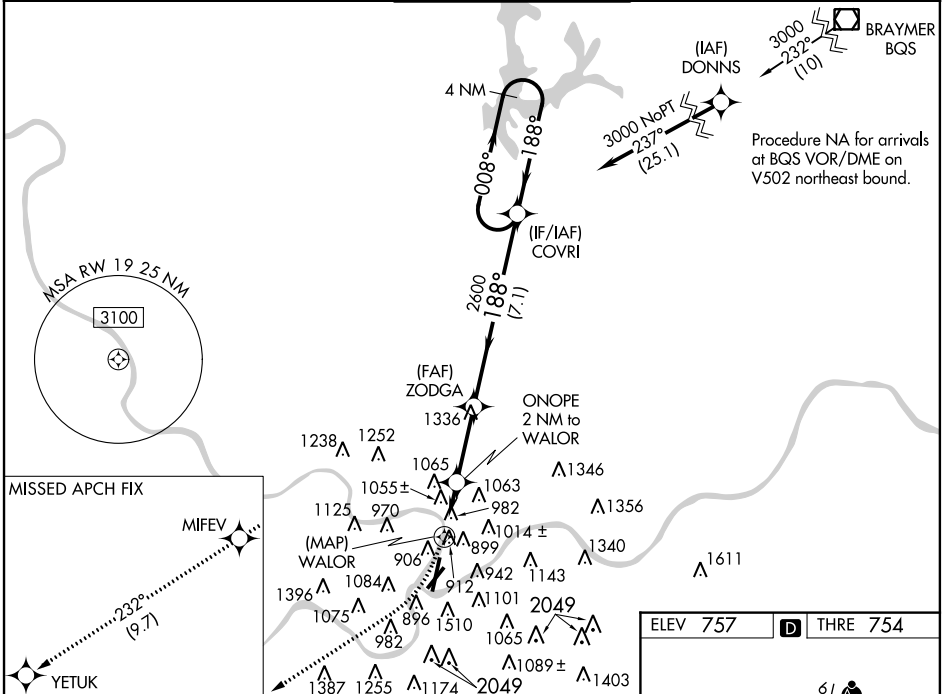
WAAS CH 90320 W19A	APP CRS 188°	Rwy Idg THRE Apt Elev 6525 754 757
--	------------------------	--

RNAV (GPS) RWY 19

KANSAS CITY/CHARLES B. WHEELER DOWNTOWN (MKC)

<p>▼ For uncompensated Baro-VNAV systems, LNAV/VNAV NA below -16°C (4°F) or above 39°C (102°F). For inoperative MALSR, increase LPV all Cats visibility to 1 3/8, LNAV/VNAV all Cats visibility to 1 1/8, LNAV Cat C visibility to 1 3/4. Circling NA east of Rwys 1 and 19. DME/DME RNP-0.3 NA. Visibility reduction by helicopters NA. Circling Cat C/D NA Rwy 3.</p>	<p>MALSF</p>	<p>MISSED APPROACH: Climbing right turn to 4000 direct MIFEV and on track 232° to YETUK.</p>
--	---------------------	---

<p>ATIS 120.75</p>	<p>KANSAS CITY APP CON 118.4 294.7</p>	<p>DOWNTOWN TOWER 133.3 257.8</p>	<p>CLNC DEL (GCO) 121.9</p>	<p>122.8</p>
-------------------------------	---	--	--	---------------------



CATEGORY	A	B	C	D
LPV DA		1157/60	403 (400-1 1/4)	
LNAV/VNAV DA		1300-1 5/8	546 (600-1 5/8)	
LNAV MDA	1340/40	586 (600-3/4)	1340-1 3/8 586 (600-1 5/8)	1640-2 1/2 886 (900-2 1/2)
CIRCLING	1380-1 623 (700-1)	1400-1 643 (700-1)	1400-1 3/4 643 (700-1 3/4)	1640-3 883 (900-3)

NC-3, 07 FEB 2013 to 07 MAR 2013

NC-3, 07 FEB 2013 to 07 MAR 2013