

LOM MK 344	APP CRS 188°	Rwy Idg THRE Apt Elev	6525 754 757
----------------------	------------------------	-----------------------------	---

NDB RWY 19

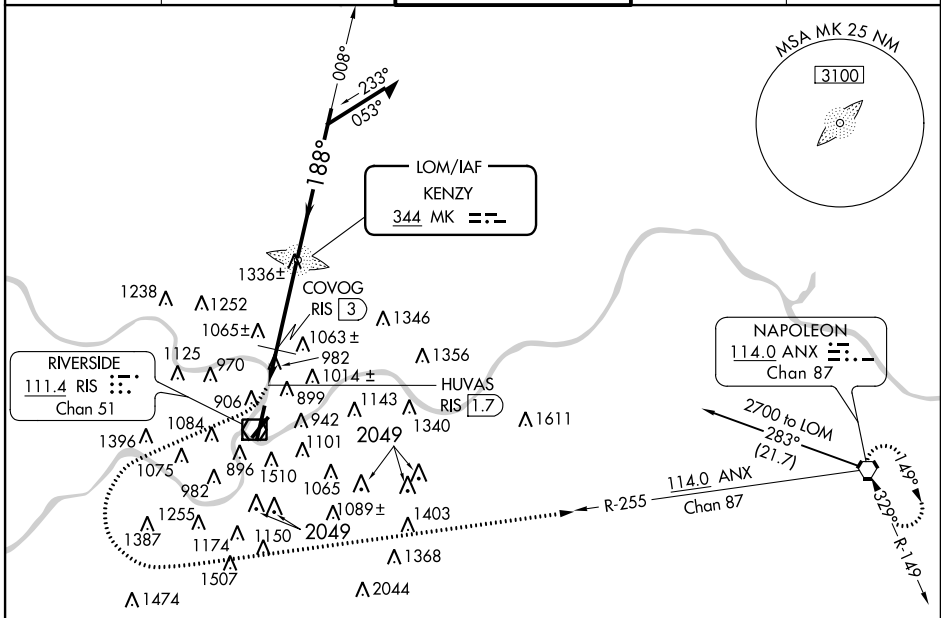
KANSAS CITY/CHARLES B. WHEELER DOWNTOWN (MKC)

▼ Circling NA east of Rwy 1-19. Visibility reduction by helicopters NA. Circling NA for Cat D to Rwy 3. For inoperative MALSF increase S-19 Cat C and D visibility to 2½, COVOG fix minimums S-19 Cat C and D visibility to 1¾.



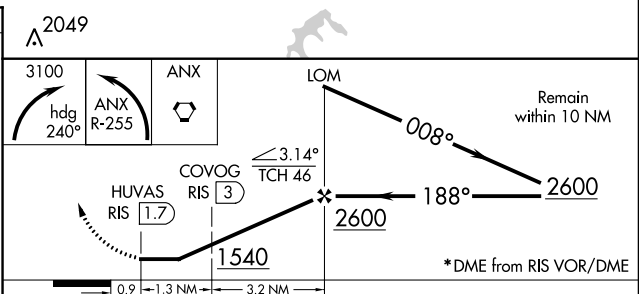
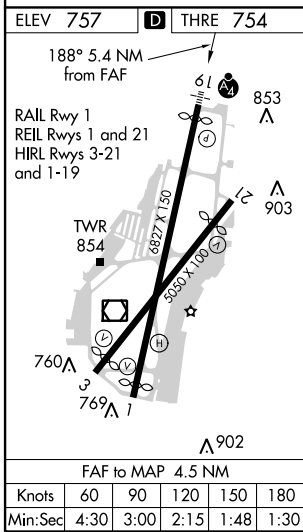
MISSED APPROACH: Climbing right turn to 3100 via heading 240° then left turn via ANX VORTAC R-255 to ANX VORTAC and hold.

ATIS 120.75	KANSAS CITY APP CON 118.4 294.7	DOWNTOWN TOWER 133.3 257.8	CLNC DEL (GCO) 121.9	122.8
-----------------------	---	--------------------------------------	--------------------------------	--------------



NC-3, 07 FEB 2013 to 07 MAR 2013

NC-3, 07 FEB 2013 to 07 MAR 2013



CATEGORY	A	B	C	D
S-19	1540/45 786 (800-¾)	1540/55 786 (800-1½)	1540-2	786 (800-2)
CIRCLING	1540-1½ 783 (800-1½)	1540-1¼ 783 (800-1½)	1540-2½	783 (800-2½)
*COVOG DME MINIMUMS				
S-19	1400/45	646 (700-¾)	1400-1½	646 (700-1½)
CIRCLING	1400-1½	643 (700-1½)	1400-1¾ 643 (700-1¾)	1400-2 643 (700-2)

NDB RWY 19