

ILS or LOC RWY 3

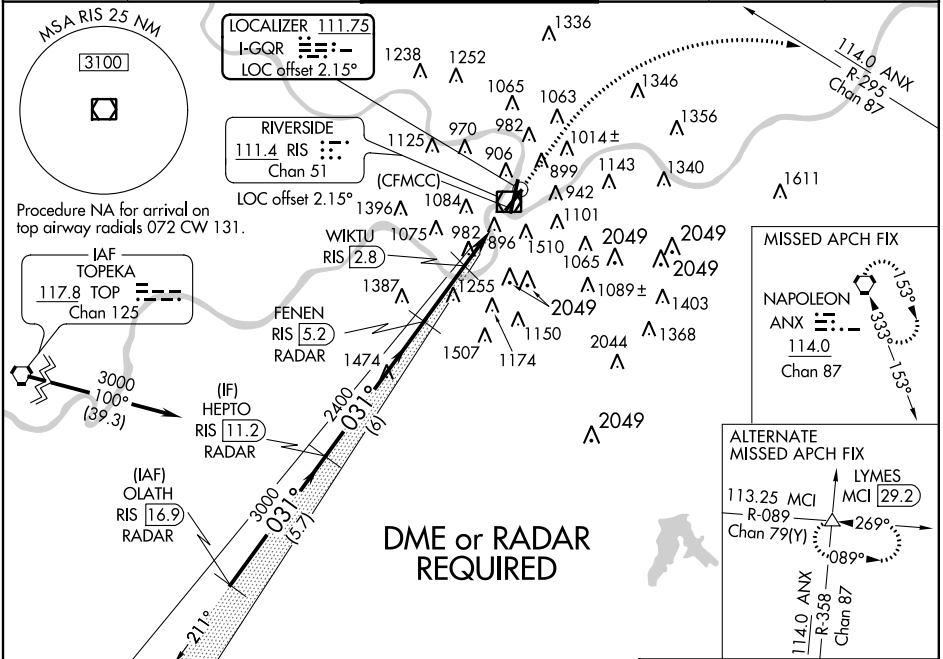
KANSAS CITY/CHARLES B. WHEELER DOWNTOWN (MKC)

LOC I-QRR 111.75	APP CRS 031°	Rwy Idg 4270
		THRE 743
		Apr Elev 757

▼ Circling NA East of Rwy 1-19. Visibility reduction by helicopters NA.
▲ Circling Cat D NA Rwy 3.
 * DME from RIS VOR/DME

MISSED APPROACH: Climb to 3000 on heading 031° and ANX VORTAC R-295 to ANX VORTAC and hold.

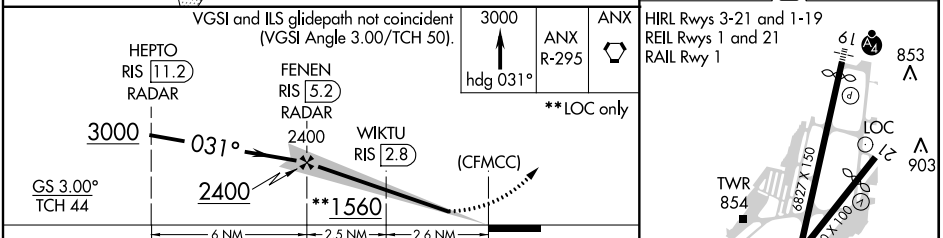
ATIS 120.75	KANSAS CITY APP CON 118.4 294.7	DOWNTOWN TOWER 133.3 257.8	CLNC DEL 121.9	GND CON 121.9	122.8 0
-----------------------	---	--------------------------------------	--------------------------	-------------------------	-----------------------



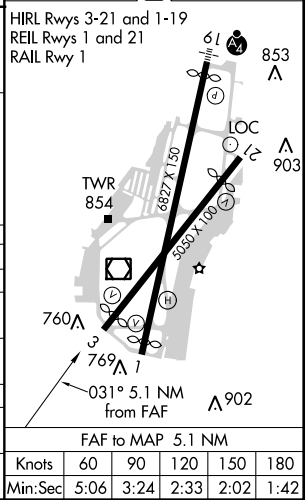
NC-3, 07 FEB 2013 to 07 MAR 2013

NC-3, 07 FEB 2013 to 07 MAR 2013

ELEV 757	D THRE 743
----------	-------------------



CATEGORY	A	B	C	D
S-ILS 3	993/40 250 (300-¾)			
S-LOC 3	1560/55 817 (900-1¼)	1560/60 817 (900-1¼)	1560-2½ 817 (900-2½)	NA
CIRCLING	1560-1 803 (900-1)	1560-1¼ 803 (900-1¼)	1560-2½ 803 (900-2½)	803 (900-2½)
* WIKTU FIX MINIMUMS				
S-LOC 3	1240/55	497 (500-1¼)	1240-1¾ 497 (500-1¾)	NA
CIRCLING	1380-1 623 (700-1)	1400-1 643 (700-1)	1400-1¾ 643 (700-1¾)	1400-2 643 (700-2)



ILS or LOC RWY 3