

LOC I-MKC	APP CRS	Rwy Idg	6525
109.9	188°	THRE	754
		Apt Elev	757

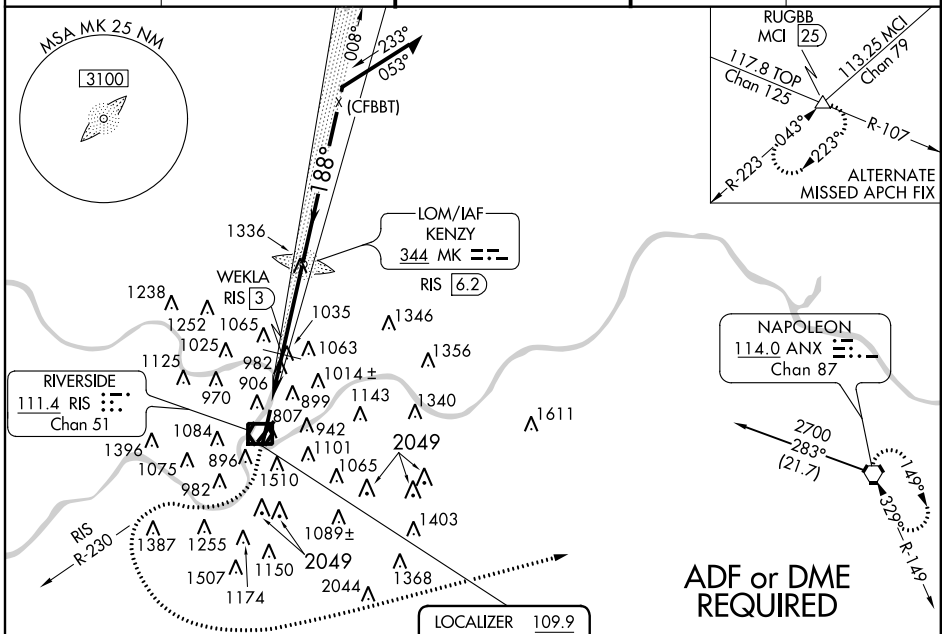
ILS or LOC RWY 19

KANSAS CITY/CHARLES B. WHEELER DOWNTOWN (MKC)

⚠ For inoperative MALSIF, increase S-LOC 19 Cat C/D visibility to 2, increase WEKLA fix minimums S-LOC 19 Cat D visibility to 1%.
⚠ Circling NA east of Rwy 1-19. Visibility reduction by helicopters NA. Circling NA for Cat D to Rwy 3. DME from RIS VOR/DME.

MALSIF MISSED APPROACH: Climb to 1300 then climbing right turn to 3100 via RIS VOR/DME R-230 then left turn direct ANX VORTAC and hold.

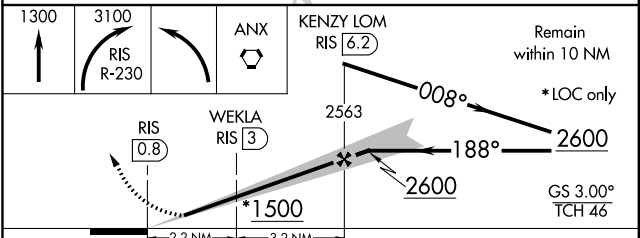
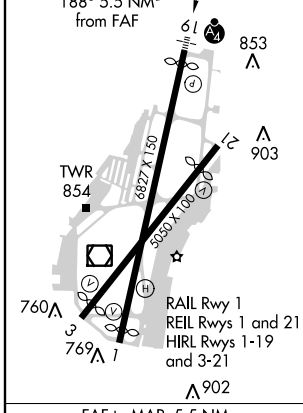
ATIS	KANSAS CITY APP CON	DOWNTOWN TOWER	CLNC DEL (GCO)	122.8
120.75	118.4 294.7	133.3 257.8	121.9	



NC-3, 07 FEB 2013 to 07 MAR 2013

NC-3, 07 FEB 2013 to 07 MAR 2013

ELEV 757	D	THRE 754
----------	----------	----------



CATEGORY	WEKLA FIX MINIMUMS			
	A	B	C	D
S-ILS 19	1004/40 250 (300-¾)			
S-LOC 19	1500/40 746 (800-¾)	1500/55 746 (800-1¼)	1500/17½	746 (800-17½)
CIRCLING	1500-1 743 (800-1)	1500-1¼ 743 (800-1¼)	1500-2¼ 743 (800-2¼)	1500-2½ 743 (800-2½)
S-LOC 19	1300/40	546 (600-¾)	1300-13½	546 (600-13½)
CIRCLING	1380-1 623 (700-1)	1400-1 643 (700-1)	1400-1¾ 643 (700-1¾)	1400-2 643 (700-2)

FAF to MAP 5.5 NM					
Knots	60	90	120	150	180
Min:Sec	5:30	3:40	2:45	2:12	1:50

ILS or LOC RWY 19