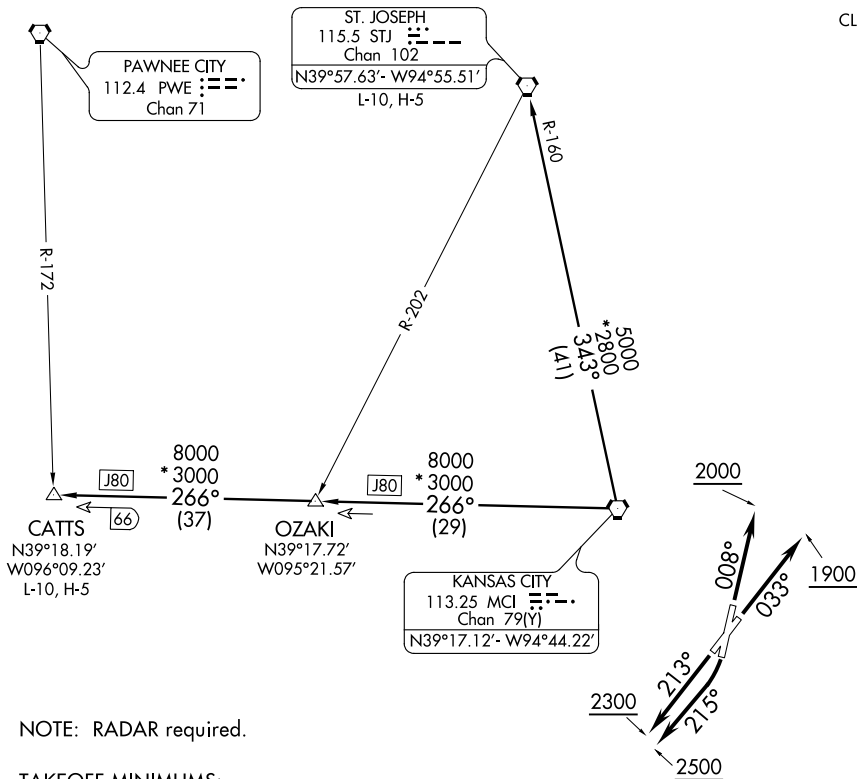


# CHIEF FOUR DEPARTURE

ATIS  
120.75  
CLNC DEL  
121.9



NC-3, 07 FEB 2013 to 07 MAR 2013

NC-3, 07 FEB 2013 to 07 MAR 2013

NOTE: RADAR required.

**TAKEOFF MINIMUMS:**

- Rwy 3: Standard.
- Rwy 1: 400-2¼ or standard with minimum climb of 307' per NM to 1100.
- Rwy 19: Standard with minimum climb of 400' per NM to 2500.
- Rwy 21: Standard with minimum climb of 251' per NM to 1700.

(NOTES CONTINUED ON FOLLOWING PAGE)

NOTE: Chart not to scale



## DEPARTURE ROUTE DESCRIPTION

- TAKEOFF RUNWAY 1: Climb heading 008° to 2000, thence . . .
- TAKEOFF RUNWAY 3: Climb heading 033° to 1900, thence . . .
- TAKEOFF RUNWAY 19: Climbing right turn heading 215° to 2500, thence . . .
- TAKEOFF RUNWAY 21: Climb heading 213° to 2300, thence . . .
- . . . fly assigned heading and altitude for vector to appropriate route. Expect filed altitude 10 minutes after departure.

CATTS TRANSITION (CHIEF4.CATTS): From over MCI VORTAC via MCI R-266 to CATTS INT.

ST. JOSEPH TRANSITION (CHIEF4.STJ): From over MCI VORTAC via MCI R-343 and STJ R-160 to STJ VORTAC.