

TACAN Chan 19	NIP 286°	APCH CRS 286°	Rwy ldg TDZE 8002 Arpt Elev 12 20
----------------------	-----------------	----------------------	--

AL-209 [UN] JACKSONVILLE NAS (TOWERS FIELD) (KNIP)

▼ *When ALS inop, increase vis CAT ABC to 1 mile, CAT D to 1¼ miles.

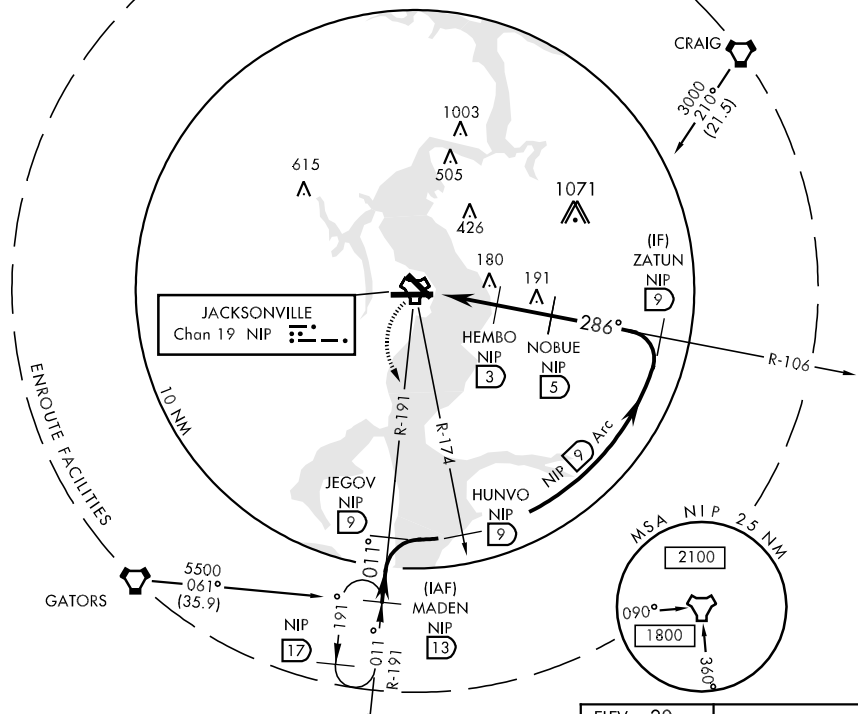


MISSED APPROACH: Climb to 500 via R-106, then climbing left turn to 1800 via NIP TACAN R-191 to MADEN and hold.

ATIS 281.0	JACKSONVILLE APP CON 123.8 377.05	NAVY JACKSONVILLE TOWER 120.0 340.2	GND CON 128.6 336.4	CLNC DEL 134.775 353.675	ASR/PAR
-------------------	--	--	----------------------------	---------------------------------	---------

CAUTION:
Inimed seg len 4 NM.

NOT FOR CIVIL USE



SE-3, 07 FEB 2013 to 07 MAR 2013

SE-3, 07 FEB 2013 to 07 MAR 2013

EMERG SAFE ALT 100 NM 2800

500 NIP R-106	1800 NIP R-191	MADEN NIP 13	ZATUN R-106	HUNVO R-174	JEGOV R-191	MADEN R-191 13
TACAN GRUEN 1.1	NIP R-106 1.3	HEMBO 3	NOBUE 5	NIP 9	NIP 9	NIP 9
1.9 NM		2 NM		3000		
CATEGORY	A		B		D	
S-28*	400-½ 388 (400-½)		400-¾ 388 (400-¾)		400-¾ 388 (400-¾)	
CIRCLING	480-1	460 (500-1)	480-1½ 460 (500-1½)	580-2 560 (600-2)		

