

TACAN Chan 19	NIP 087°	APCH CRS 087°	Rwy ldg TDZE Arpt Elev 8002 20	AL-209 [USN]	JACKSONVILLE NAS (TOWERS FIELD) (KNIP)
-------------------------	--------------------	-------------------------	--	--------------	--

ALSF-1 MISSED APPROACH: Climbing right turn to 1800 via NIP R-191 to MADEN and hold.

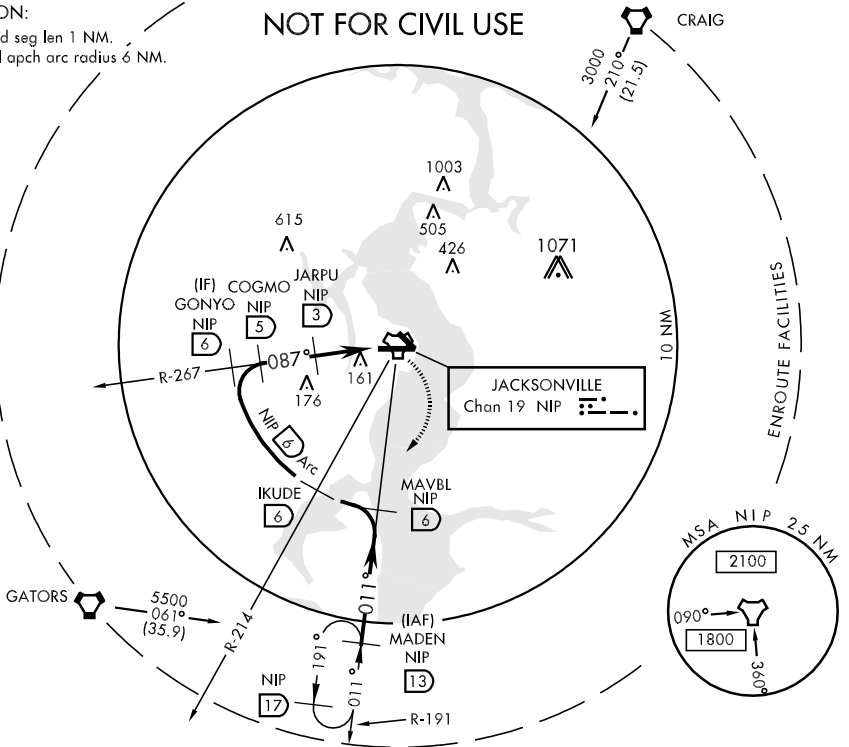
*When ALS inop, increase vis CAT ABC to 1 mile, CAT D to 1 1/4 miles.

ATIS 281.0	JACKSONVILLE APP CON 123.8 377.05	NAVY JACKSONVILLE TOWER 120.0 340.2	GND CON 128.6 336.4	CLNC DEL 134.775 353.675	ASR/PAR
----------------------	---	---	-------------------------------	------------------------------------	---------

CAUTION:

1. Immed seg len 1 NM.
2. Initial opch arc radius 6 NM.

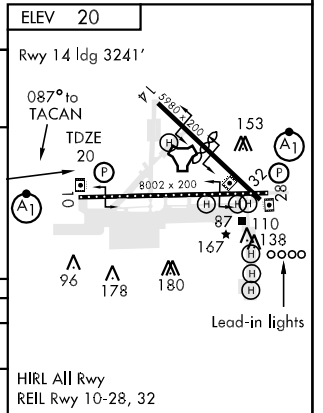
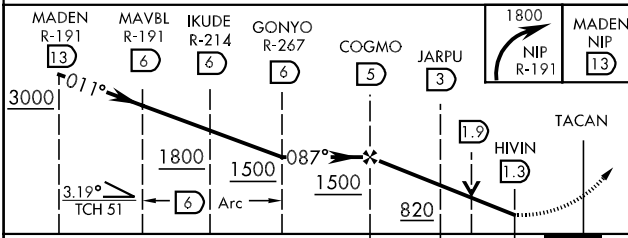
NOT FOR CIVIL USE



SE-3, 07 FEB 2013 to 07 MAR 2013

SE-3, 07 FEB 2013 to 07 MAR 2013

EMERG SAFE ALT 100 NM 2800



CATEGORY	A	B	C	D
S-10 *	420-1/2 400 (400-1/2)		420-3/4 400 (400-3/4)	
CIRCLING	480-1	460 (500-1)	480-1 1/2 460 (500-1 1/2)	580-2 560 (600-2)