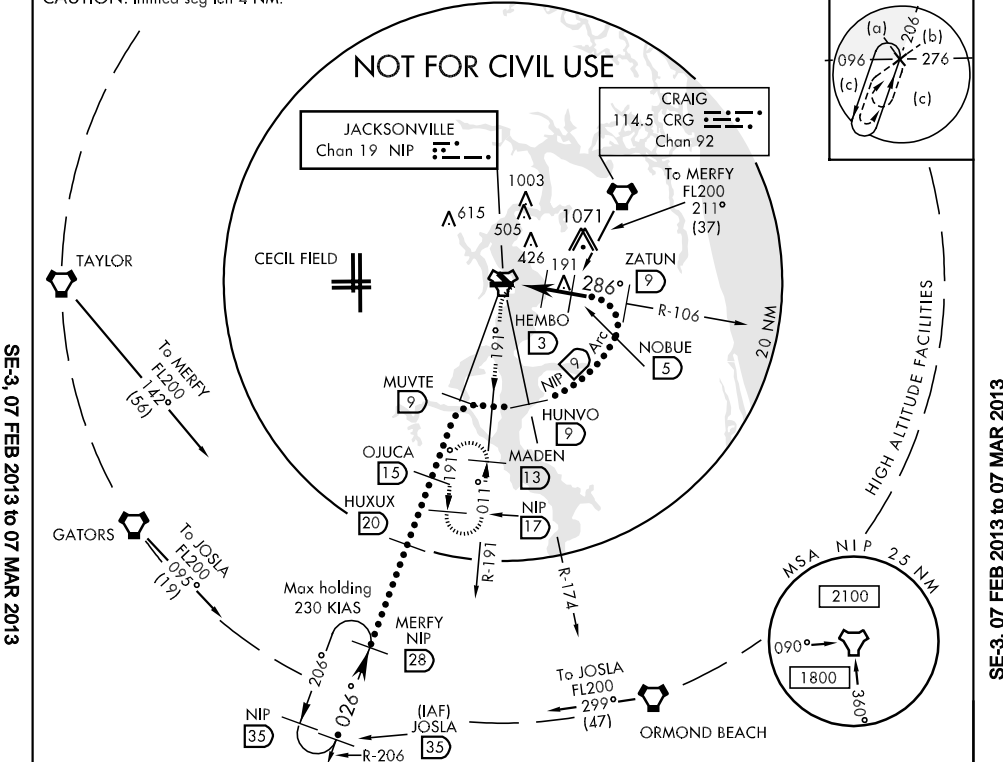


TACAN NIP Chan 19	APCH CRS 286°	Rwy ldg 8002 TDZE 12 Arpt Elev 20	JAN-209 [USN]	JACKSONVILLE NAS (TOWERS FIELD) (KNIP)
----------------------	------------------	---	---------------	--

▼ * When ALS inop, increase vis CAT C to 1 mile, CAT DE to 1¼ miles.
ALSF-1
MISSED APPROACH: Climb to 500 via R-106, then climbing left turn to 1800 via NIP TACAN R-191 to MADEN and hold.

ATIS 281.0	JACKSONVILLE APP CON 123.8 377.05	NAVY JACKSONVILLE TOWER 120.0 340.2	GND CON 128.6 336.4	CLNC DEL 134.775 353.675	ASR/PAR
---------------	--------------------------------------	--	------------------------	-----------------------------	---------

CAUTION: Intimed seg len 4 NM.



SE-3, 07 FEB 2013 to 07 MAR 2013

SE-3, 07 FEB 2013 to 07 MAR 2013

EMERG SAFE ALT 100 NM 2800

	500 NIP R-106	1800 NIP R-191	MADEN NIP 13						
	TACAN	HEMBO NIP 3	NOBUE 5	ZATUN R-106 9	HUNVO R-174 9	MUVTE R-206 9	OJUCA 15	HUXUX 20	JOSLA R-206 35
	GRUEN 1.1	NIP 1.2							
CATEGORY	C			D			E		
S-28 *	400-¾			388 (400-¾)					
CIRCLING	480-1½ 460 (500-1½)			580-2 560 (600-2)			860-3 840 (900-3)		

