

TACAN NIP Chan 19	APCH CRS 087°	Rwy ldg TDZE Arpt Elev	8002 20 20	JAL-209 [USN]	JACKSONVILLE NAS (TOWERS FIELD) (KNIP)
----------------------	------------------	------------------------------	------------------	---------------	--

▼ * When ALS inop, increase vis CAT C to 1 mile, CAT D to 1¼ miles, CAT E to 1½ miles.

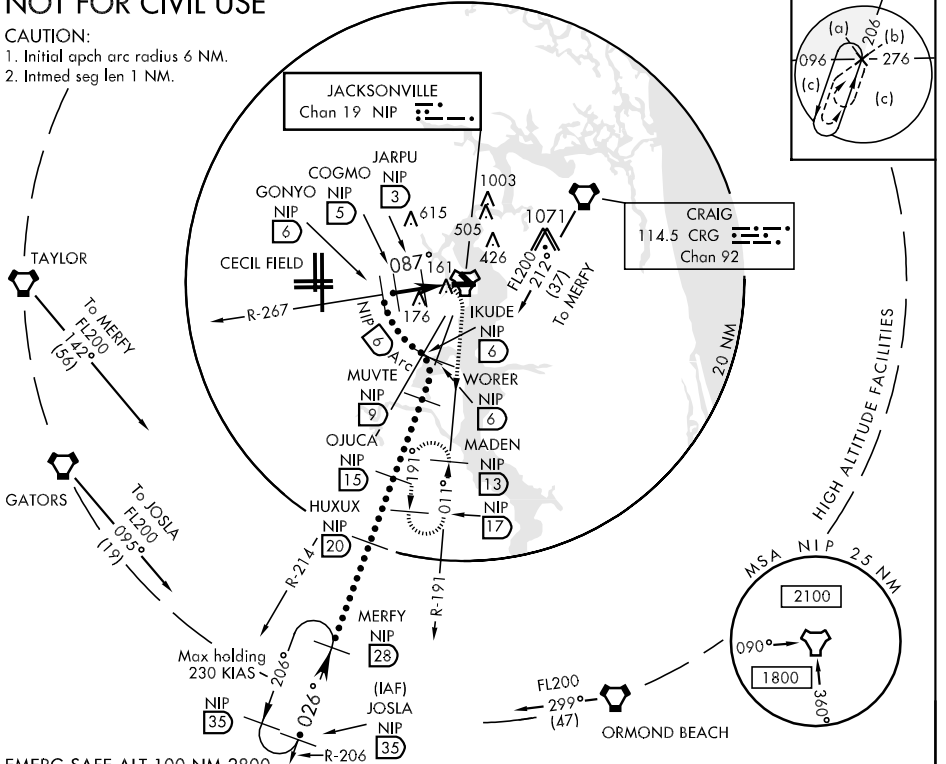
ALSF-1 MISSED APPROACH: Climbing right turn to 1800 via NIP TACAN R-191 direct MADEN and hold.

ATIS 281.0	JACKSONVILLE APP CON 123.8 377.05	NAVY JACKSONVILLE TOWER 120.0 340.2	GND CON 128.6 336.4	CLNC DEL 134.775 353.675	ASR/PAR
---------------	--------------------------------------	--	------------------------	-----------------------------	---------

NOT FOR CIVIL USE

CAUTION:

1. Initial apch arc radius 6 NM.
2. Intmed seg len 1 NM.



SE-3, 07 FEB 2013 to 07 MAR 2013

SE-3, 07 FEB 2013 to 07 MAR 2013

EMERG SAFE ALT 100 NM 2800		ELEV 20	
<p>JOSLA R-206 (35) HUXUX (20) OJUACA (15) WORER R-206 (6) IKUDE GONYO R-267 (6) COGMO (5) JARPU NIP (3) TACAN</p> <p>FL200 13,000 8000 4000 1800 1500 820</p> <p>3.19° TCH 51</p>		<p>1800 MADEN NIP (13) R-191</p> <p>Rwy 14 ldg 3241'</p> <p>087° to TACAN</p> <p>TDZE 20</p> <p>5900 6000 153 31 28 87 110 138 167</p> <p>8002 x 200</p> <p>96 178 180</p> <p>Lead-in lights</p> <p>HIRL All Rwy REIL Rwy 10-28, 32</p>	
CATEGORY	C	D	E
S-10 *	420-¾	400 (400-¾)	420-1 400 (400-1)
CIRCLING	480-1½ 460 (500-1½)	580-2 560 (600-2)	860-3 840 (900-3)