

WAAS CH 57901 W32A	APP CRS 319°	Rwy Idg TDZE Apt Elev	4008 41 41
--	------------------------	-----------------------------	---------------------------------------

RNAV (GPS) RWY 32

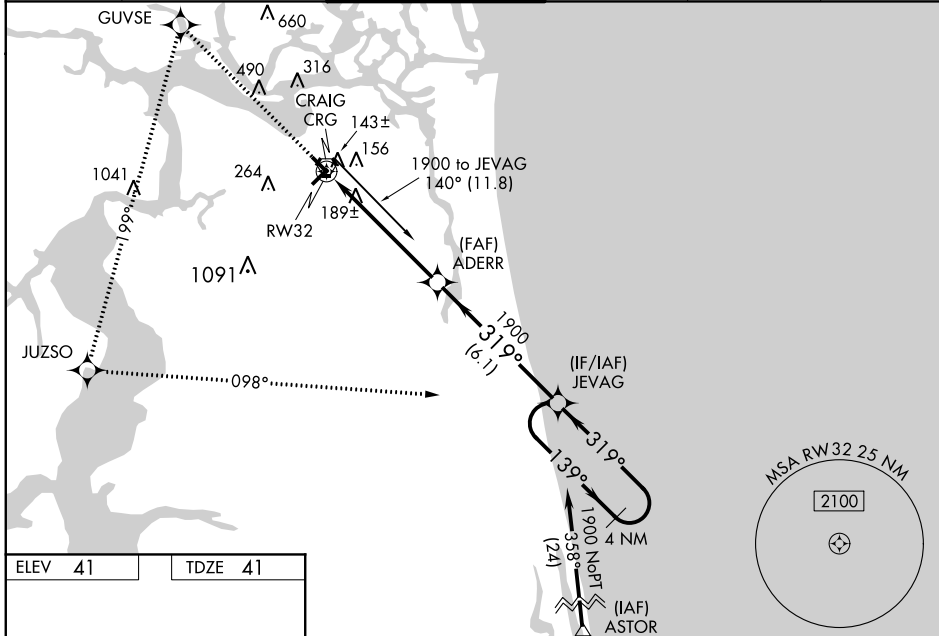
JACKSONVILLE/CRAIG MUNI (CRG)

⚠ Baro-VNAV NA when using Jacksonville Intl altimeter setting. For uncompensated Baro-VNAV systems, LNAV/VNAV NA below -15° C (5° F) or above 49° C (120° F). DME/DME RNP-0.3 NA. When local altimeter setting not received, use Jacksonville Intl altimeter setting and increase all DA 32 feet and all MDA 40 feet, LNAV/VNAV all Cats, and LNAV Cat. C visibility ¼ mile. For inoperative MALSR, increase LNAV Cat. D visibility to ¼. For inoperative MALSR when using Jacksonville Intl altimeter setting, increase LNAV/VNAV all Cats, visibility to ¼ and LNAV Cat. C visibility to ¼. VDP NA when using Jacksonville Intl altimeter setting.



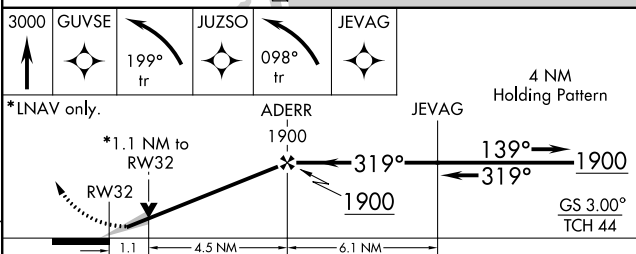
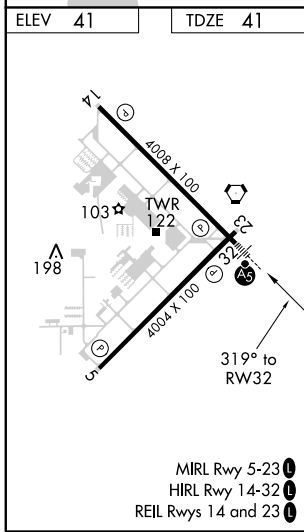
MISSED APPROACH: Climb to 3000 direct GUVSE and left turn via 199° track to JUZSO and left turn via 098° track to JEVAG and hold.

ATIS 125.4	JACKSONVILLE APP CON 124.9 308.4	CRAIG TOWER ★ 132.1(CTAF) 257.625	GND CON 121.8	CLNC DEL 118.35	UNICOM 122.95
----------------------	--	---	-------------------------	---------------------------	-------------------------



SE-3, 07 FEB 2013 to 07 MAR 2013

SE-3, 07 FEB 2013 to 07 MAR 2013



CATEGORY	A	B	C	D
LPV DA		241-1/2	200 (200-1/2)	
LNAV/VNAV DA		479-1	438 (500-1)	
LNAV MDA		440-1/2	399 (400-1/2)	440-1 399 (400-1)
CIRCLING	500-1 459 (500-1)	580-1 539 (600-1)	580-1/2 539 (600-1/2)	600-2 559 (600-2)