

WAAS CH <b>56416</b> <b>W34A</b>	APP CRS <b>339°</b>	Rwy Idg TDZE Apt Elev	<b>5387</b> <b>322</b> <b>341</b>
--	------------------------	-----------------------------	---

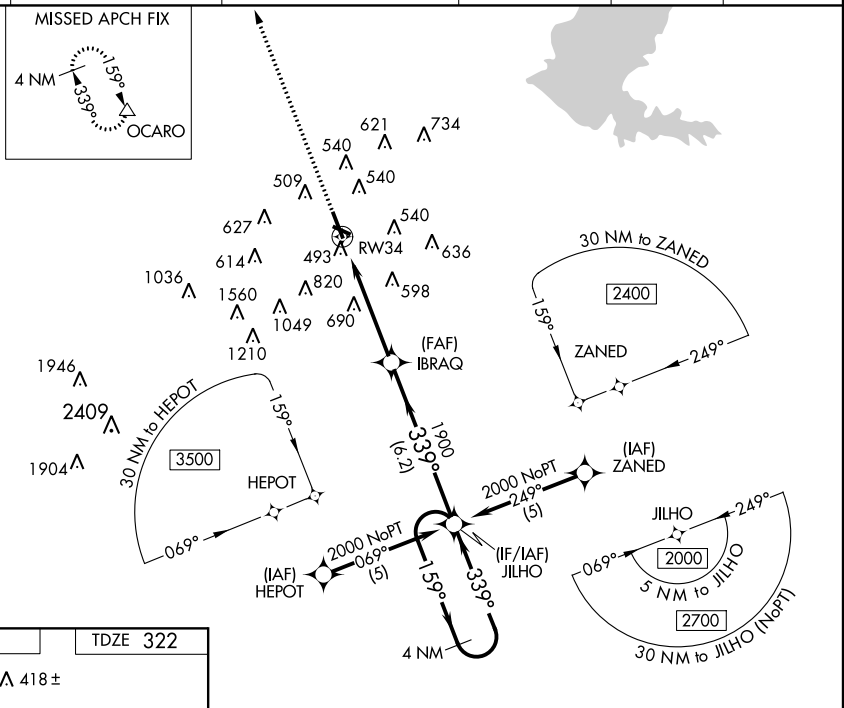
# RNAV (GPS) RWY 34

JACKSON/HAWKINS FIELD (HKS)

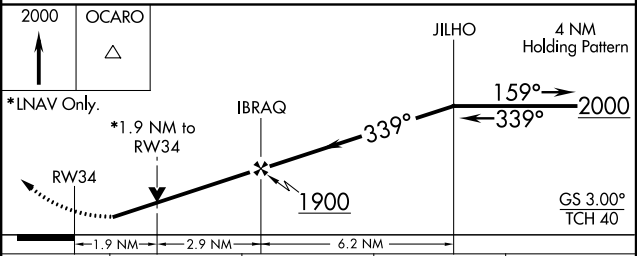
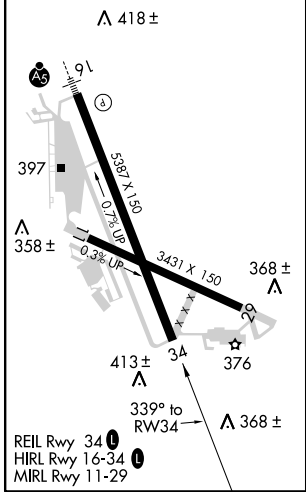
**⚠** For uncompensated Baro-VNAV systems, LNAV/VNAV NA below -15°C (5°F) or above 48°C (118°F). DME/DME RNP-0.3 NA. Visibility reduction by helicopters NA. When local altimeter setting not received, use Jackson-Evers Intl altimeter setting; increase all DA 19 feet and all MDA 20 feet. Baro-VNAV and VDP NA when using Jackson-Evers Intl altimeter setting.

**⚠** MISSED APPROACH: Climb to 2000 direct OCARO and hold.

ASOS <b>120.625</b>	JACKSON APP CON ★ <b>123.9 125.25 319.2</b>	HAWKINS TOWER ★ <b>119.65 (CTAF) 0 257.8</b>	GND CON <b>121.9 239.0</b>	CLNC DEL <b>121.9</b>	UNICOM <b>122.95</b>
------------------------	--	---	-------------------------------	--------------------------	-------------------------



ELEV <b>341</b>	TDZE <b>322</b>
-----------------	-----------------



CATEGORY	A	B	C	D
LPV DA		709-1½	387 (400-1½)	
LNAV/VNAV DA		803-1¾	481 (400-1¾)	
LNAV MDA	940-1	618 (700-1)	940-1¾ 618 (700-1¾)	940-2 618 (700-2)
CIRCLING	940-1	599 (600-1)	940-1¾ 599 (600-1¾)	940-2 599 (600-2)

SC-4, 07 FEB 2013 to 07 MAR 2013

SC-4, 07 FEB 2013 to 07 MAR 2013