

WAAS CH 50316 W16A	APP CRS 159°	Rwy Idg TDZE 341 Apt Elev 341	5387
--	------------------------	---	-------------

RNAV (GPS) RWY 16

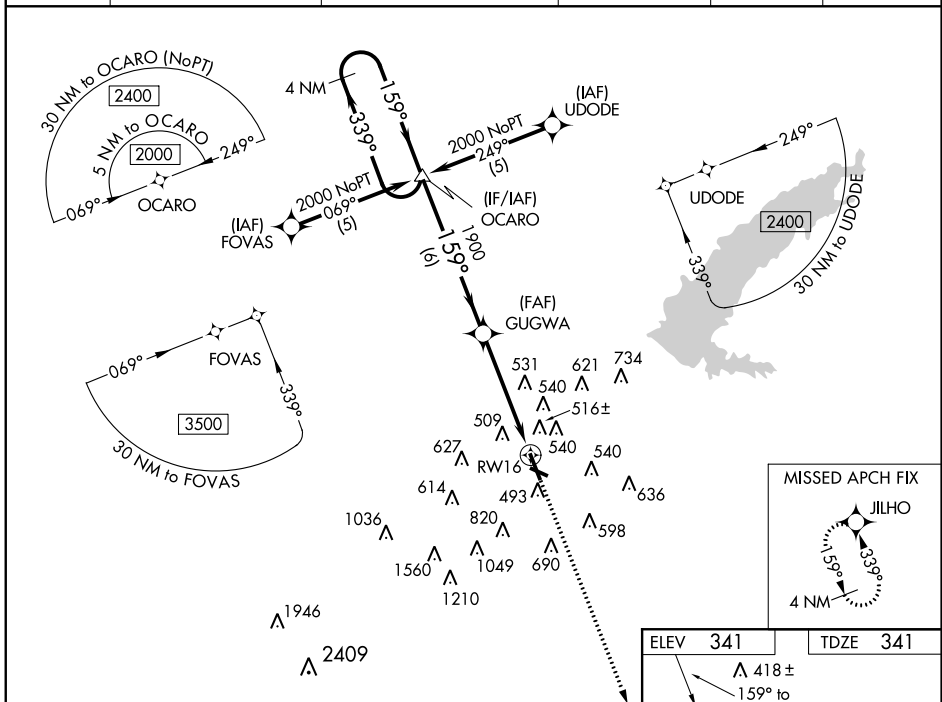
JACKSON/HAWKINS FIELD (HKS)

▼ For uncompensated Baro-VNAV systems, LNAV/VNAV NA below -1.5°C (5°F) or above 48°C (118°F). DME/DME RNP-0.3 NA. When local altimeter setting not received, use Jackson-Evers Intl altimeter setting; increase all DA 19 feet and all MDA 20 feet. Baro-VNAV and VDP NA when using Jackson-Evers Intl altimeter setting.

MALSR

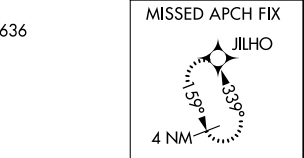
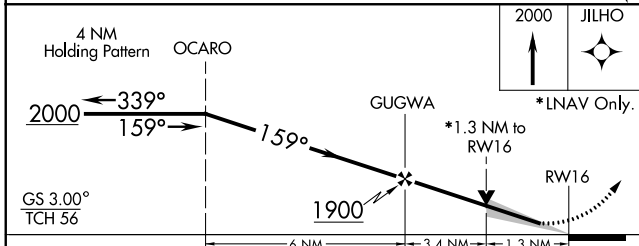
MISSED APPROACH: Climb to 2000 direct JILHO and hold.

ASOS 120.625	JACKSON APP CON ★ 123.9 125.25 319.2	HAWKINS TOWER ★ 119.65 (CTAF) 0 257.8	GND CON 121.9 239.0	CLNC DEL 121.9	UNICOM 122.95
------------------------	--	---	-------------------------------	--------------------------	-------------------------



SC-4, 07 FEB 2013 to 07 MAR 2013

SC-4, 07 FEB 2013 to 07 MAR 2013



CATEGORY	A	B	C	D
LPV DA		541-½	200 (200-½)	
LNAV/VNAV DA		896-1½	555 (600-1½)	
LNAV MDA	800-½ 459 (500-½)		800-¾ 459 (500-¾)	800-1 459 (500-1)
CIRCLING	840-1 499 (500-1)		840-1½ 499 (500-1½)	920-2 579 (600-2)

