


LOC I-JHF 111.7	APP CRS 159°	Rwy Idg 5387
		TDZE 341
		Apt Elev 341

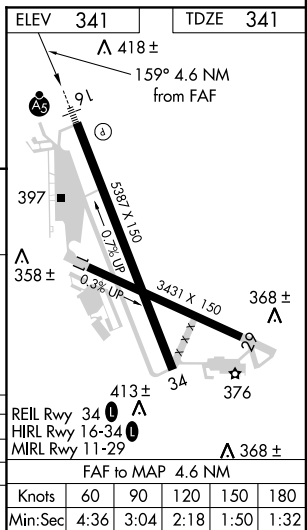
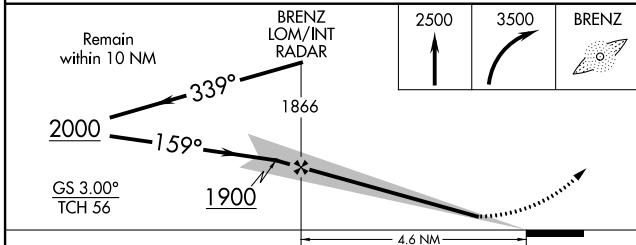
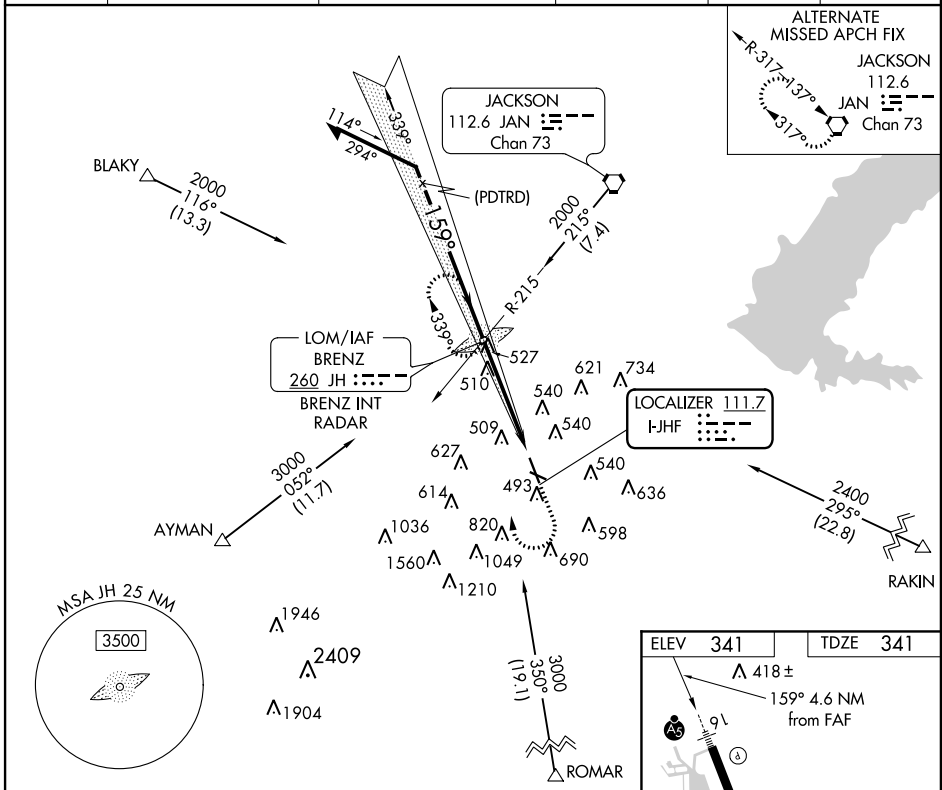
ILS or LOC RWY 16

JACKSON/HAWKINS FIELD (HKS)

⚠ When local altimeter setting not received, use Jackson-Evers Intl altimeter setting; increase all DA 19 feet and all MDA 20 feet and increase S-LOC 16 Cat D visibility ¼ mile. Glideslope unusable when control tower closed, only localizer minimums authorized during this period. ADF Required.

MALSR
 MISSED APPROACH: Climb to 2500 then climbing right turn to 3500 direct BRENZ LOM and hold.

ASOS 120.625	JACKSON APP CON ★ 123.9 125.25 319.2	HAWKINS TOWER ★ 119.65 (CTAF) 257.8	GND CON 121.9 239.0	CLNC DEL 121.9	UNICOM 122.95
------------------------	--	---	-------------------------------	--------------------------	-------------------------



CATEGORY	A	B	C	D
S-ILS 16	541-½ 200 (200-½)			
S-LOC 16	760-½	419 (500-½)	760-¾	419 (500-¾)
CIRCLING	840-1	499 (500-1)	840-1 ½	920-2
			499 (500-1 ½)	579 (600-2)

FAF to MAP 4.6 NM					
Knots	60	90	120	150	180
Min:Sec	4:36	3:04	2:18	1:50	1:32

SC-4, 07 FEB 2013 to 07 MAR 2013

SC-4, 07 FEB 2013 to 07 MAR 2013