

WAAS CH 50306 W05B	APP CRS 046°	Rwy Idg 10000 TDZE 791 Apt Elev 797
--	------------------------	--

RNAV (GPS) Y RWY 5R

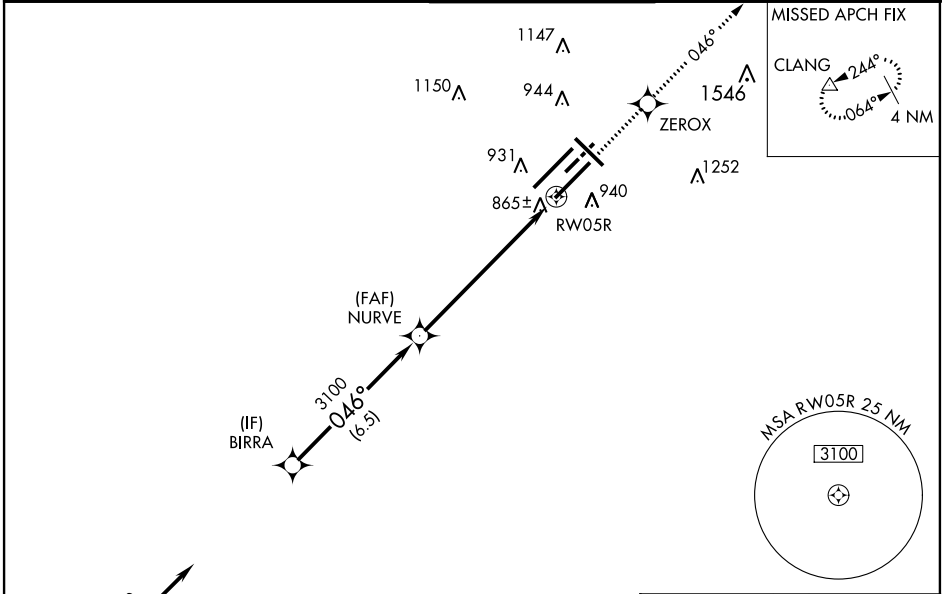
INDIANAPOLIS INTL (IND)

▽ For inoperative ALSF, increase LPV all Cats visibility to RVR 6000. For uncompensated Baro-VNAV systems, LNAV/VNAV NA below -16°C (4°F) or above 47°C (116°F). DME/DME RNP-0.3 NA. Simultaneous approach authorized with ILS or LOC Rwy 5L, ILS Rwy 5L (Cat II), ILS Rwy 5L (Cat III). LNAV procedure NA during simultaneous operations. Use of FD or AP providing RNAV track guidance required during simultaneous operations.

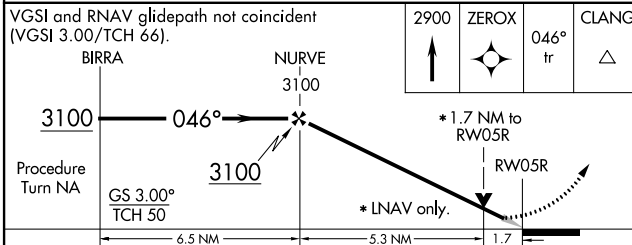
ALSF-2

MISSED APPROACH: Climb to 2900 direct ZEROX and via 046° track to CLANG and hold.

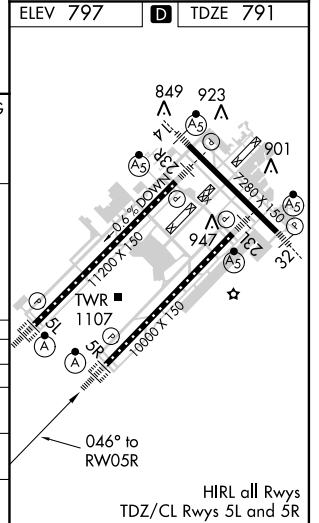
ATIS 134.25	INDIANAPOLIS APP CON 119.3 317.8	INDY TOWER 120.9 257.8	GND CON 121.9 257.8	CLNC DEL 128.75 257.8
-----------------------	--	----------------------------------	-------------------------------	---------------------------------



Procedure NA for arrivals at KELLY via V11 and V12 southwest bound.



CATEGORY	A	B	C	D
LPV DA	1137/40		346 (400-¾)	
LNAV/VNAV DA	1220/50		429 (500-1)	
LNAV MDA	1400/24 609 (700-½)		1400/60 609 (700-¼)	1400-1½ 609 (700-½)
CIRCLING	1420-1 623 (700-1)		1420-1¾ 623 (700-¾)	1420-2 623 (700-2)



EC-2, 07 FEB 2013 to 07 MAR 2013

EC-2, 07 FEB 2013 to 07 MAR 2013