

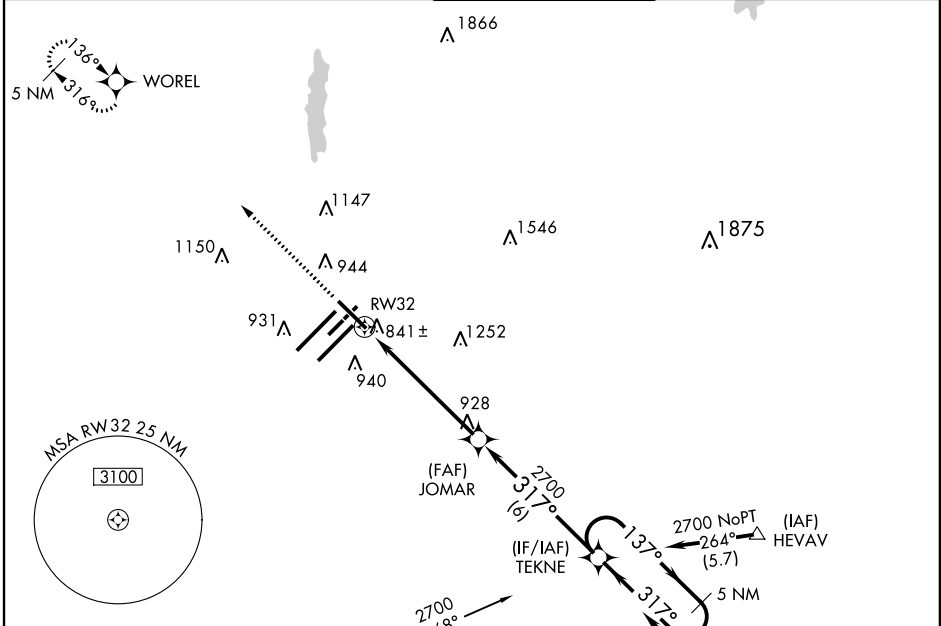
RNAV (GPS) Y RWY 32

INDIANAPOLIS INTL (IND)

WAAS CH 62802 W32A	APP CRS 317°	Rwy Idg TDZE 7280 792 Apt Elev 797
--	------------------------	---

<p>▼ For inoperative MALS/R, increase LNAV Cat D visibility to RVR 6000. For uncompensated Baro-VNAV systems, LNAV/VNAV NA below -16°C (4°F) or above 47°C (116°F). DME/DME RNP-0.3 NA.</p>	<p>MALS/R</p>	<p>MISSED APPROACH: Climb to 2500 direct WOREL and hold.</p>
--	---------------	--

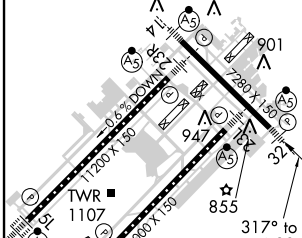
<p>ATIS 134.25</p>	<p>INDIANAPOLIS APP CON 119.3 317.8</p>	<p>INDY TOWER 120.9 257.8</p>	<p>GND CON 121.9 257.8</p>	<p>CLNC DEL 128.75 257.8</p>
-------------------------------	--	--	---------------------------------------	---



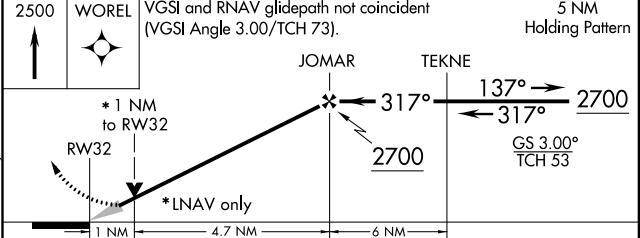
EC-2, 07 FEB 2013 to 07 MAR 2013

EC-2, 07 FEB 2013 to 07 MAR 2013

ELEV 797	D	TDZE 792
-----------------	----------	-----------------



HIRL all Rwy
TDZ/CL Rwy 5L and 5R



CATEGORY	A	B	C	D
LPV DA		1042/24	250 (300-½)	
LNAV/VNAV DA		1275/60	483 (500-1¼)	
LNAV MDA		1180/24	388 (400-½)	1180/50 388 (400-1)
CIRCLING	1420-1	623 (700-1)	1420-1¾ 623 (700-1¾)	1420-2 623 (700-2)