

WAAS CH 77706 W23B	APP CRS 227°	Rwy Idg 11200 TDZE 783 Apt Elev 797
--	------------------------	--

RNAV (GPS) Y RWY 23R

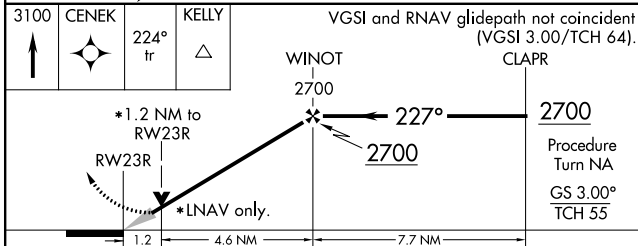
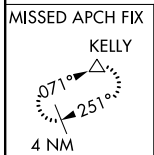
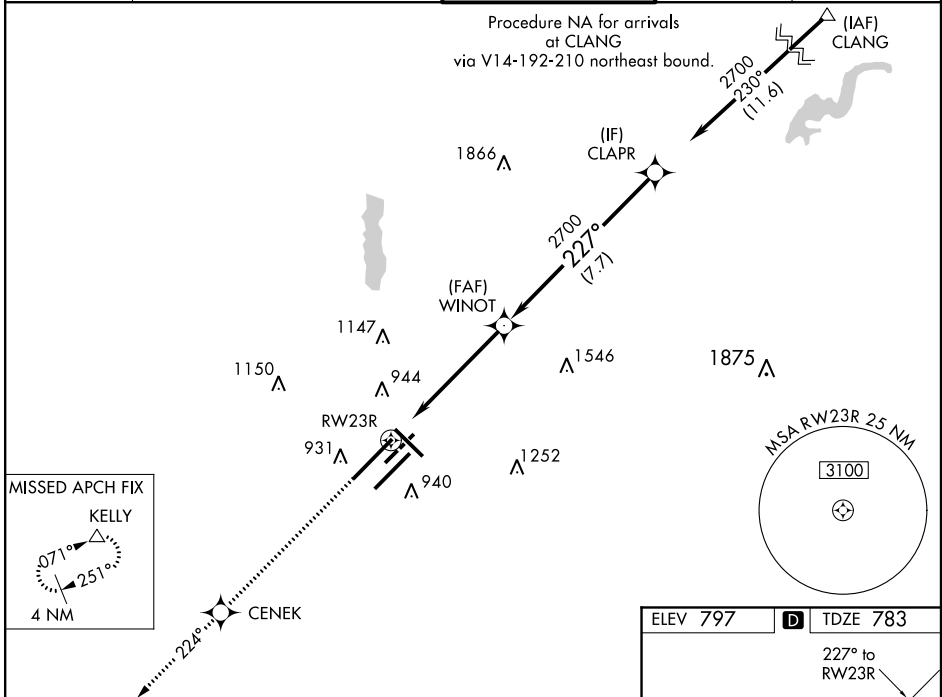
INDIANAPOLIS INTL (IND)

▼ For inoperative MALS, increase LPV all Cats visibility to RVR 6000. For uncompensated Baro-VNAV systems, LNAV/VNAV NA below -16°C (4°F) or above 47°C (116°F). DME/DME RNP-0.3 NA. Simultaneous approach authorized with ILS or LOC Rwy 23L. LNAV procedure NA during simultaneous operations. Use of FD or AP providing RNAV track guidance required during simultaneous operations.

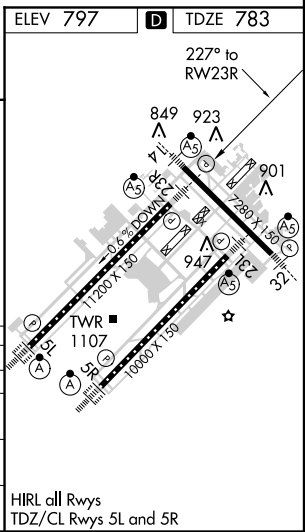


MALS R
MISSED APPROACH: Climb to 3100 direct CENEK and via 224° track to KELLY and hold.

ATIS 134.25	INDIANAPOLIS APP CON 119.3 317.8	INDY TOWER 120.9 257.8	GND CON 121.9 257.8	CLNC DEL 128.75 257.8
-----------------------	--	----------------------------------	-------------------------------	---------------------------------



CATEGORY	A	B	C	D
LPV DA	1172/40 389 (400-¾)			
LNAV/VNAV DA	1242/50 459 (500-1)			
LNAV MDA	1220/24	437 (500-½)	1220/40 437 (500-¾)	1220/50 437 (500-1)
CIRCLING	1420-1	623 (700-1)	1420-1¾ 623 (700-1¾)	1420-2 623 (700-2)



EC-2, 07 FEB 2013 to 07 MAR 2013

EC-2, 07 FEB 2013 to 07 MAR 2013