

RNAV (GPS) Y RWY 14

INDIANAPOLIS INTL (IND)

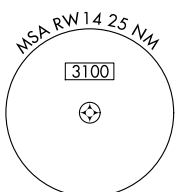
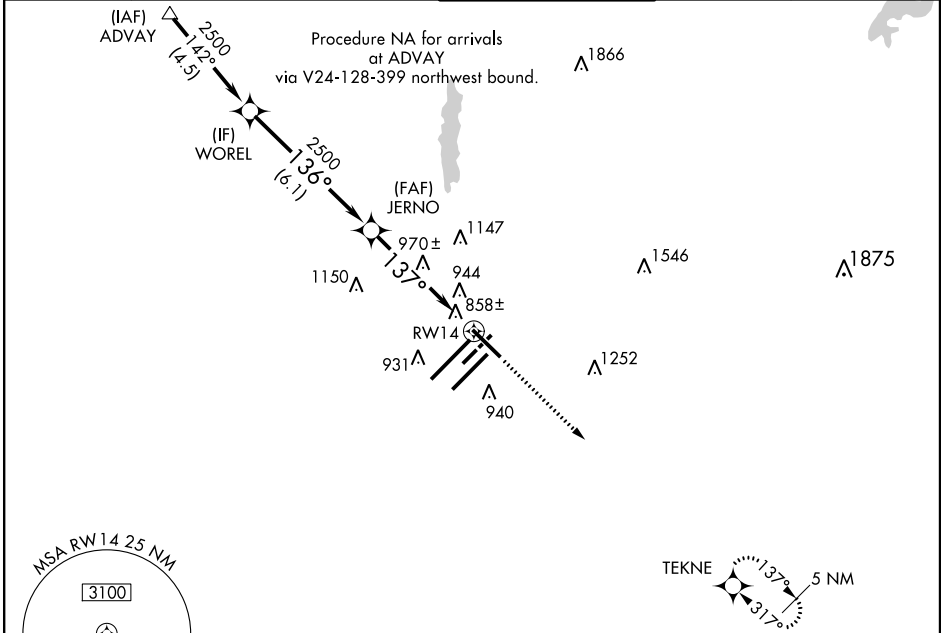
WAAS CH 42602 W14A	APP CRS 137°	Rwy Idg 7280 TDZE 796 Apt Elev 797
----------------------------------------	------------------------	---------------------------------------------------------------

▼ For inoperative MALS/R, increase LNAV Cat D visibility to RVR 6000.
For uncompensated Baro-VNAV systems, LNAV/VNAV NA below -16°C (4°F) or above 47°C (116°F). DME/DME RNP-0.3 NA.



MISSED APPROACH:
Climb to 2700 direct
TEKNE and hold.

ATIS 134.25	INDIANAPOLIS APP CON 119.3 317.8	INDY TOWER 120.9 257.8	GND CON 121.9 257.8	CLNC DEL 128.75 257.8
-----------------------	--------------------------------------------	----------------------------------	-------------------------------	---------------------------------

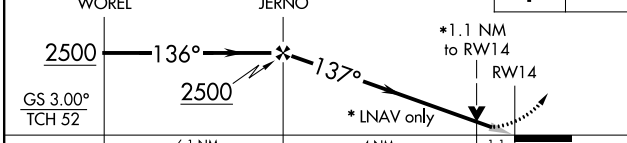


Procedure Turn NA

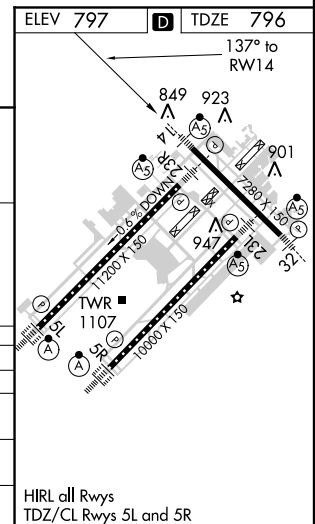
VGSI and RNAV glidepath not coincident (VGSI Angle 3.00/TCH 68).

2700

TEKNE



CATEGORY	A	B	C	D
LPV DA		1046/24	250 (300-½)	
LNAV/VNAV DA		1230/50	434 (500-1)	
LNAV MDA	1220/24	424 (500-½)	1220/40 424 (500-¾)	1220/50 424 (500-1)
CIRCLING	1420-1	623 (700-1)	1420-1¾ 623 (700-1¾)	1420-2 623 (700-2)



EC-2, 07 FEB 2013 to 07 MAR 2013

EC-2, 07 FEB 2013 to 07 MAR 2013