


APP CRS	Rwy Idg	11200
046°	TDZE	748
	Apt Elev	797

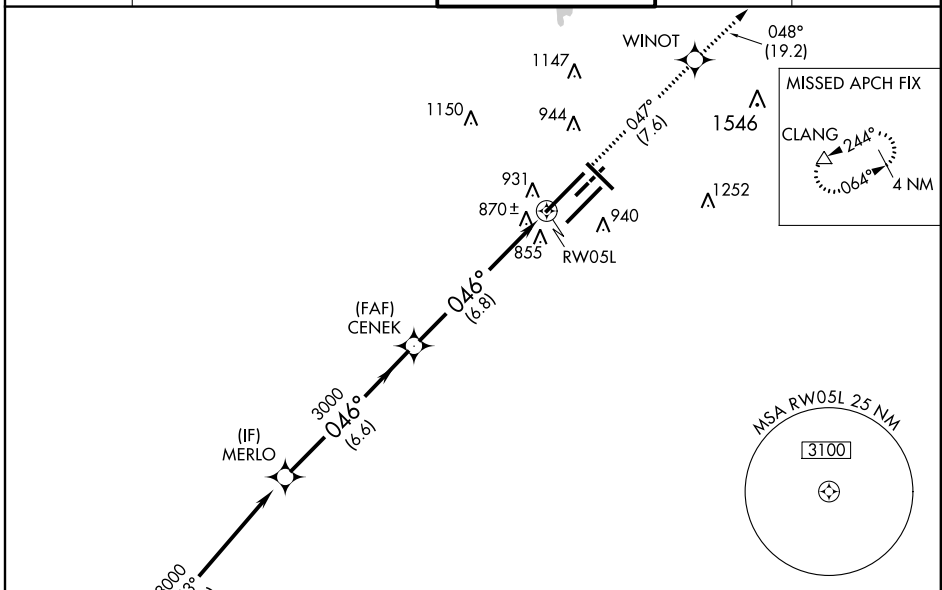
RNAV (RNP) Z RWY 5L

INDIANAPOLIS INTL (IND)

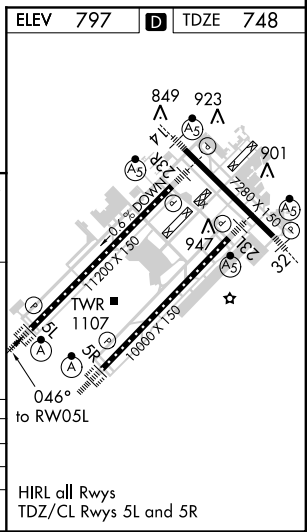
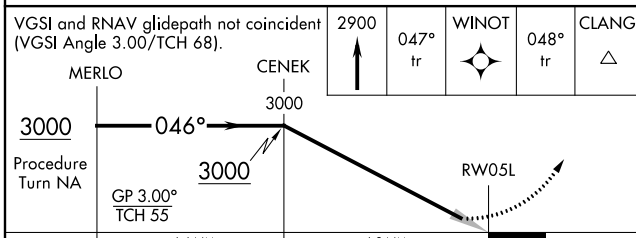
GPS Required. For uncompensated Baro-VNAV systems, procedure NA below -16°C (4°F) or above 47°C (116°F). For inoperative ALSF, increase RNP 0.15 visibility to RVR 6000, and RNP 0.30 visibility to 1¾ mile. Simultaneous approach authorized with ILS or LOC Rwy 23L. Use of FD or AP providing RNAV track guidance required during simultaneous operations.

ALSF-2
 MISSED APPROACH: Climb to 2900 via 047° track to WINOT and 048° track to CLANG and hold.

ATIS 134.25	INDIANAPOLIS APP CON 119.3 317.8	INDY TOWER 120.9 257.8	GND CON 121.9 257.8	CLNC DEL 128.75 257.8
-----------------------	--	----------------------------------	-------------------------------	---------------------------------



ELEV 797	D TDZE 748
----------	-------------------



CATEGORY	A	B	C	D
RNP 0.15 DA		1139/50	391 (400-1)	
RNP 0.30 DA		1215/60	467 (500-1¼)	

AUTHORIZATION REQUIRED

EC-2, 07 FEB 2013 to 07 MAR 2013

EC-2, 07 FEB 2013 to 07 MAR 2013