


APP CRS 317°	Rwy Idg 7280
	TDZE 792
	Apt Elev 797

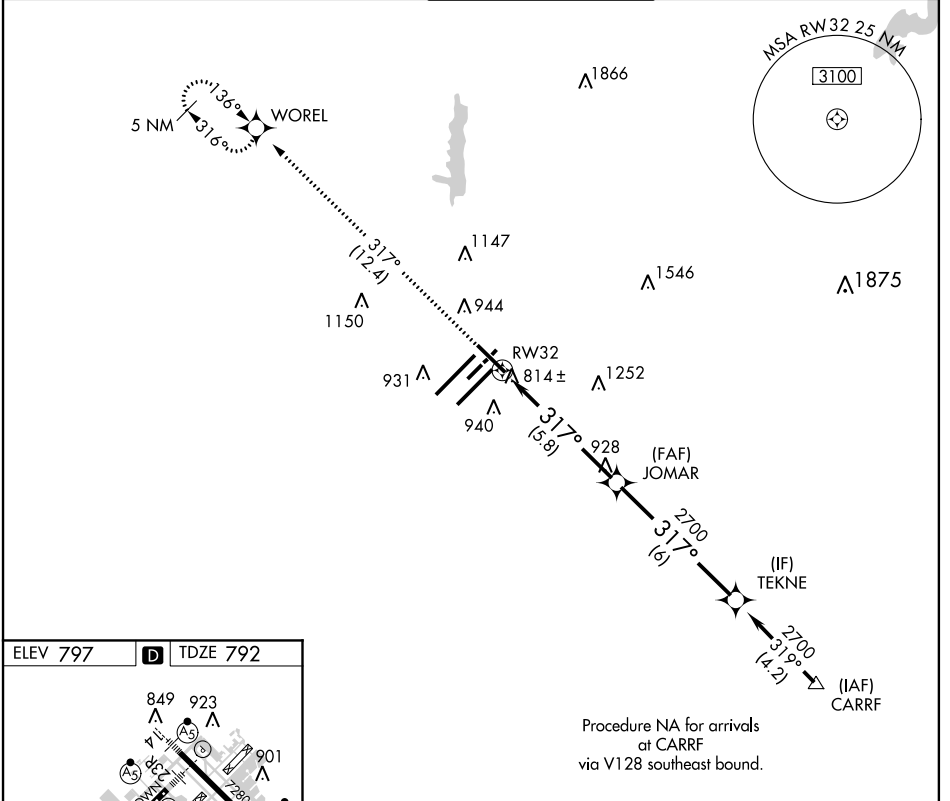
RNAV (RNP) Z RWY 32

INDIANAPOLIS INTL (IND)

GPS Required. For uncompensated Baro-VNAV systems, procedure NA below -16°C (4°F) or above 47°C (116°F). For inoperative MALSR, increase RNP 0.19 visibility to RVR 5000 and RNP 0.30 visibility to 1½.

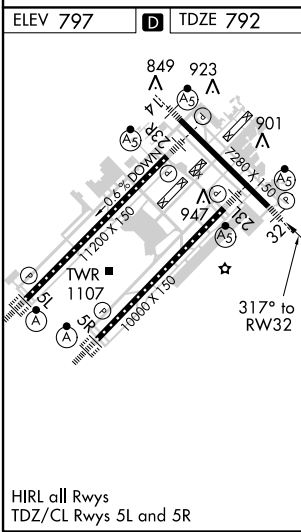
MALSR  **MISSED APPROACH:** Climb to 2500 via 317° track to WOREL and hold.

ATIS 134.25	INDIANAPOLIS APP CON 119.3 317.8	INDY TOWER 120.9 257.8	GND CON 121.9 257.8	CLNC DEL 128.75 257.8
-----------------------	--	----------------------------------	-------------------------------	---------------------------------



EC-2, 07 FEB 2013 to 07 MAR 2013

EC-2, 07 FEB 2013 to 07 MAR 2013



2500	317° tr	WOREL	JOMAR 2700	TEKNE	Procedure Turn NA
VGSI and RNAV glidepath not coincident (VGSI Angle 3.00/TCH 73).					
RW32		5.8 NM		6 NM	
GP 3.00° TCH 53					
CATEGORY	A	B	C	D	
RNP 0.19 DA		1090/24	298 (300-½)		
RNP 0.30 DA		1186/50	394 (400-1)		

AUTHORIZATION REQUIRED