


RNAV (RNP) Z RWY 23R

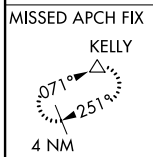
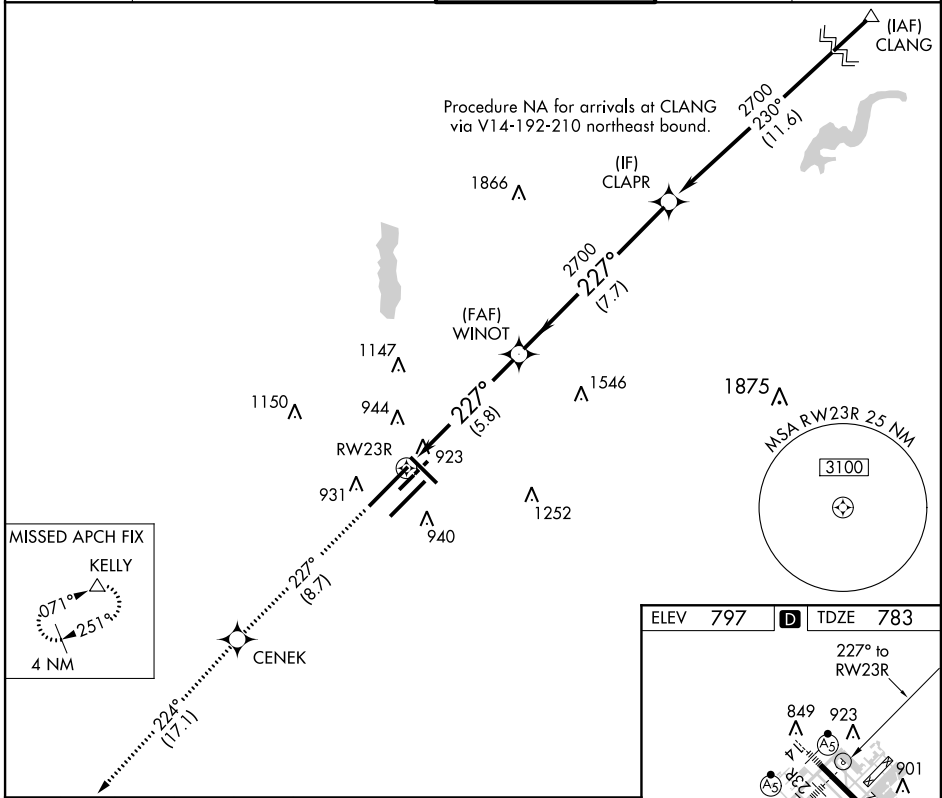
INDIANAPOLIS INTL (IND)

APP CRS	Rwy Idg	11200
227°	TDZE	783
	Apt Elev	797

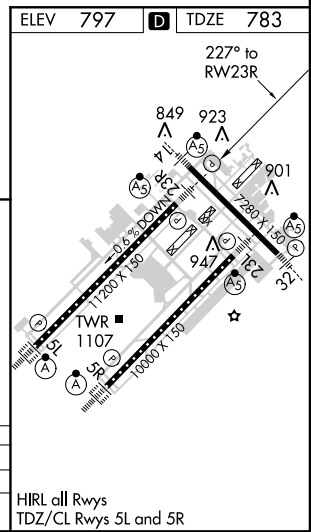
GPS Required. For uncompensated Baro-VNAV systems, procedure NA below -16°C (4°F) or above 47°C (116°F). For inoperative MALSR, increase RNP 0.30 visibility to 1 1/2 mile. Simultaneous approach authorized with ILS or LOC Rwy 23L. Use of FD or AP providing RNAV track guidance required during simultaneous operations.

MALSR

MISSED APPROACH: Climb to 3100 via 227° track to CENEK and via 224° track to KELLY and hold.

ATIS 134.25	INDIANAPOLIS APP CON 119.3 317.8	INDY TOWER 120.9 257.8	GND CON 121.9 257.8	CLNC DEL 128.75 257.8
-----------------------	--	----------------------------------	-------------------------------	---------------------------------



3100	227° ir	CENEK	224° ir	KELLY	WINOT 2700	CLAPR	Procedure Turn NA
VGSi and RNAV glidepath not coincident (VGSi Angle 3.00/TCH 64).							
RW23R		227°		2700		GP 3.00° TCH 55	
5.8 NM		7.7 NM					
CATEGORY	A	B	C	D			
RNP 0.30 DA	1220/50		437 (500-1)				
AUTHORIZATION REQUIRED							



EC-2, 07 FEB 2013 to 07 MAR 2013

EC-2, 07 FEB 2013 to 07 MAR 2013