


# RNAV (RNP) Z RWY 23L

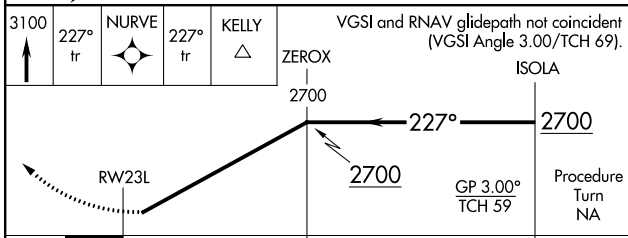
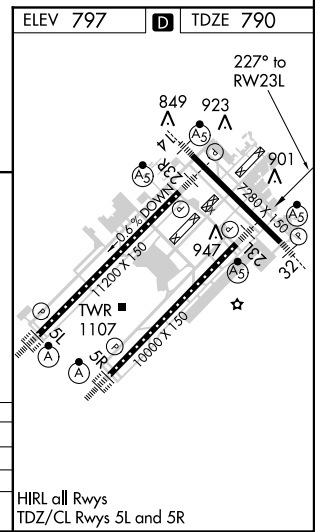
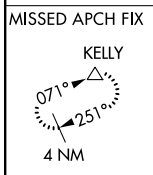
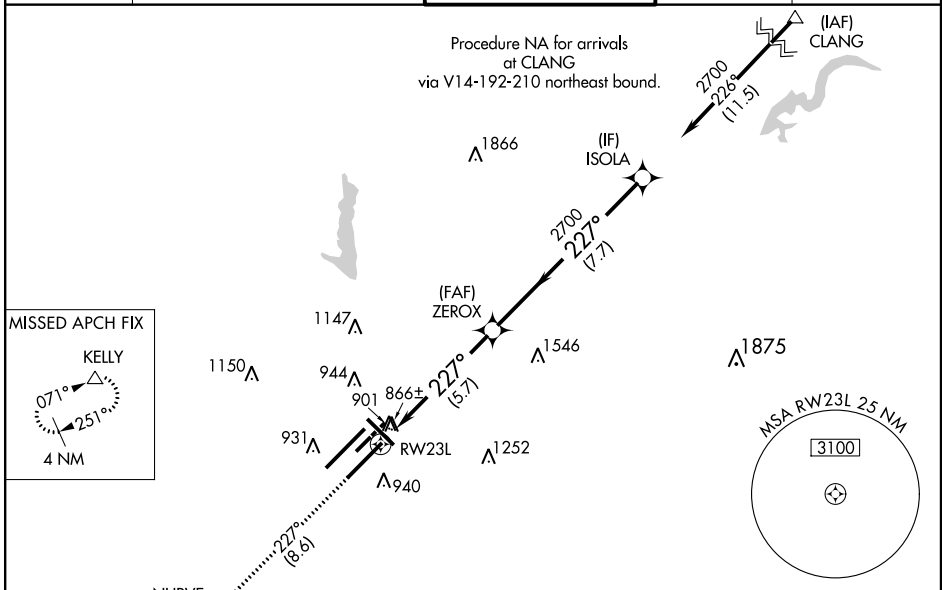
INDIANAPOLIS INTL (IND)

APP CRS	Rwy Idg	<b>10000</b>
<b>227°</b>	TDZE	<b>790</b>
	Apt Elev	<b>797</b>

**GPS Required.** For uncompensated Baro-VNAV systems, procedure NA below -16°C (4°F) or above 47°C (116°F). For inoperative MALSR, increase RNP 0.30 and RNP 0.25 all Cats visibility to RVR 6000. Visibility reduction by helicopters NA. Simultaneous approach authorized with ILS or LOC Rwy 23R. Use of FD or AP providing RNAV track guidance required during simultaneous operations.

**MALSR**  
 MISSED APPROACH: Climb to 3100 via 227° track to NURVE and 227° track to KELLY and hold.

<b>ATIS</b> 134.25	<b>INDIANAPOLIS APP CON</b> 119.3 317.8	<b>INDY TOWER</b> 120.9 257.8	<b>GND CON</b> 121.9 257.8	<b>CLNC DEL</b> 128.75 257.8
-----------------------	--	----------------------------------	-------------------------------	---------------------------------



CATEGORY	A	B	C	D
RNP 0.25 DA		1168/40	378 (400-3/4)	
RNP 0.30 DA		1182/50	392 (400-1)	

**AUTHORIZATION REQUIRED**

EC-2, 07 FEB 2013 to 07 MAR 2013

EC-2, 07 FEB 2013 to 07 MAR 2013