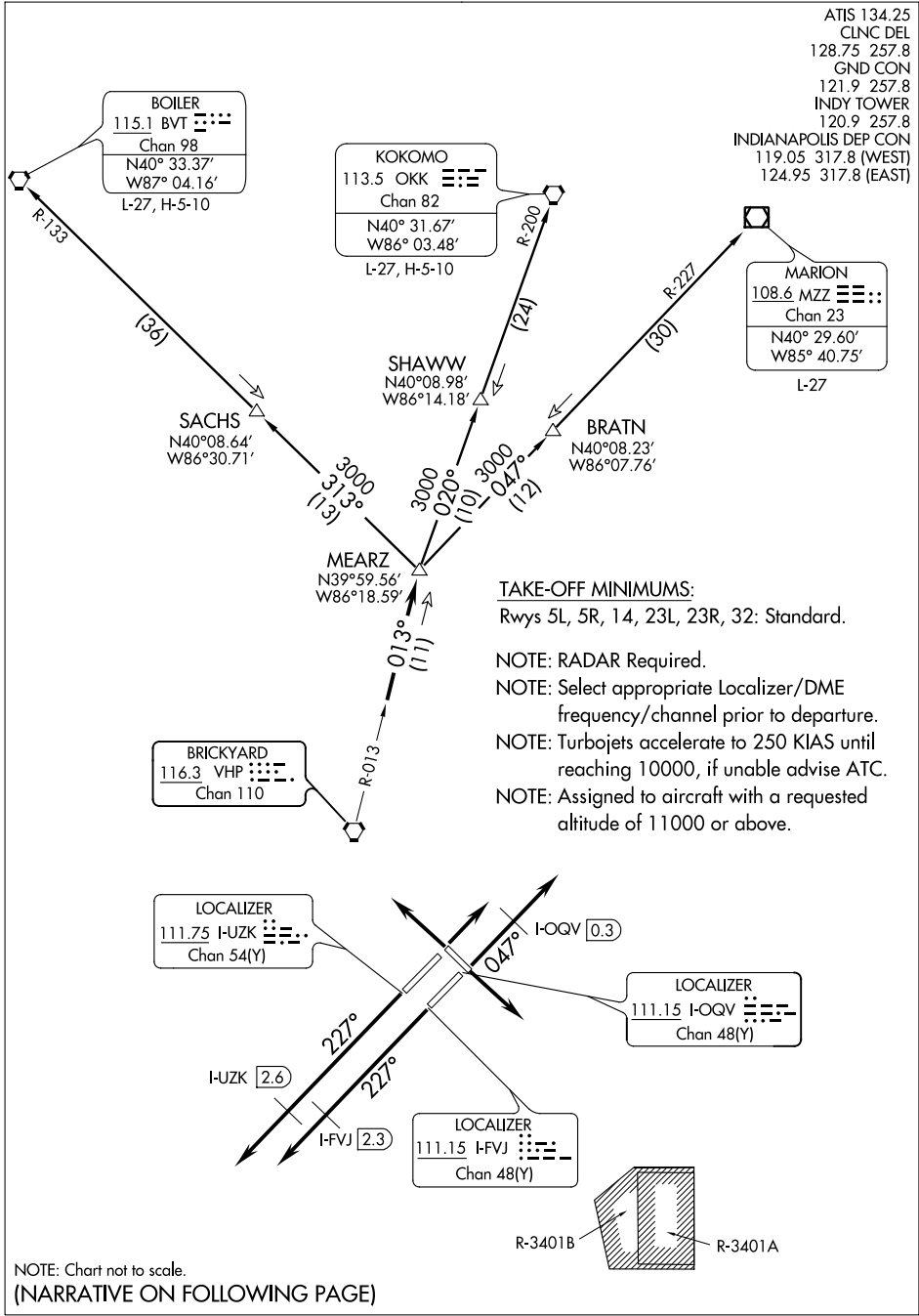


MEARZ TWO DEPARTURE

INDIANAPOLIS, INDIANA

ATIS 134.25
 CLNC DEL 128.75 257.8
 GND CON 121.9 257.8
 INDY TOWER 120.9 257.8
 INDIANAPOLIS DEP CON 119.05 317.8 (WEST)
 124.95 317.8 (EAST)



TAKE-OFF MINIMUMS:

Rwys 5L, 5R, 14, 23L, 23R, 32: Standard.

NOTE: RADAR Required.

NOTE: Select appropriate Localizer/DME frequency/channel prior to departure.

NOTE: Turbojets accelerate to 250 KIAS until reaching 10000, if unable advise ATC.

NOTE: Assigned to aircraft with a requested altitude of 11000 or above.

NOTE: Chart not to scale.
(NARRATIVE ON FOLLOWING PAGE)

EC-2, 07 FEB 2013 to 07 MAR 2013

EC-2, 07 FEB 2013 to 07 MAR 2013