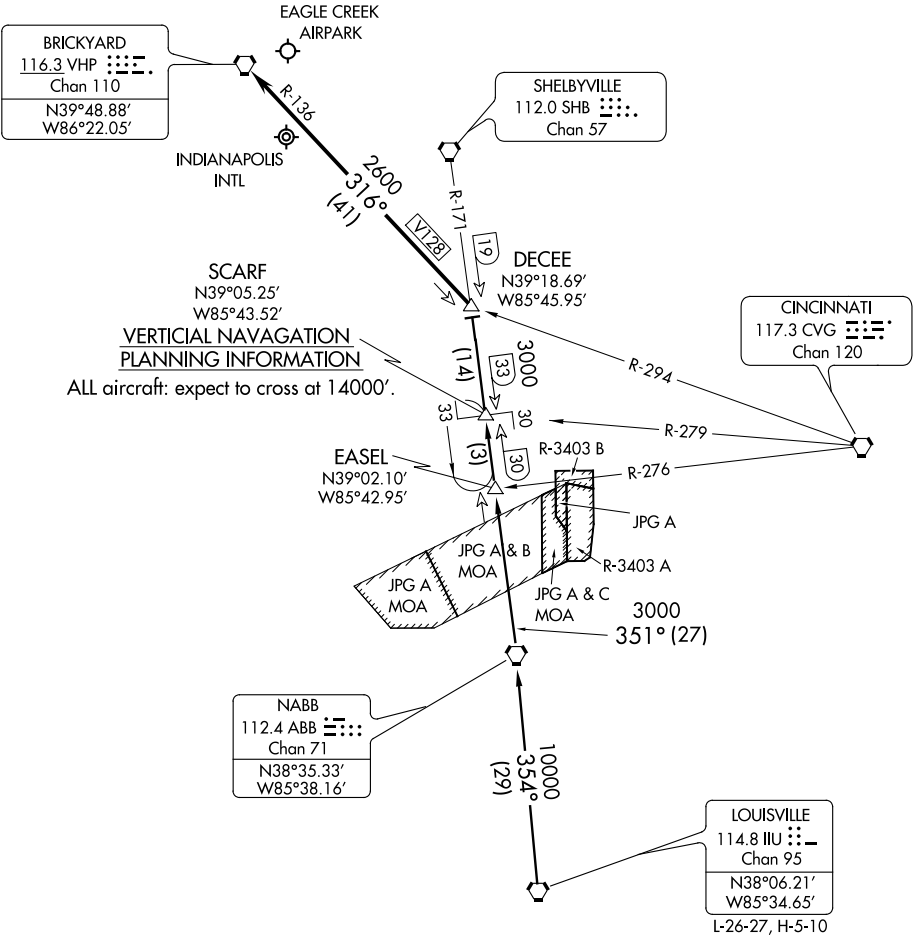


# DECEE FOUR ARRIVAL

INDIANAPOLIS, INDIANA

INDIANAPOLIS APP CON  
119.3 317.8  
ATIS 134.25



EC-2, 07 FEB 2013 to 07 MAR 2013

EC-2, 07 FEB 2013 to 07 MAR 2013

NOTE: Chart not to scale.

**LOUISVILLE TRANSITION (IIU.DECEE4):** From over IIU VORTAC via IIU R-354 to ABB VORTAC, then via ABB R-351 and SHB R-171 to DECEE INT.

... From over DECEE INT, via VHP R-136 to VHP VORTAC, expect radar vectors to final approach course after DECEE.

# DECEE FOUR ARRIVAL

INDIANAPOLIS, INDIANA