


VORTAC HON <b>117.6</b> Chan <b>123</b>	APP CRS <b>124°</b>	Rwy Idg TDZE <b>1289</b> Apt Elev <b>1289</b>	<b>7201</b>
---	------------------------	---	-------------

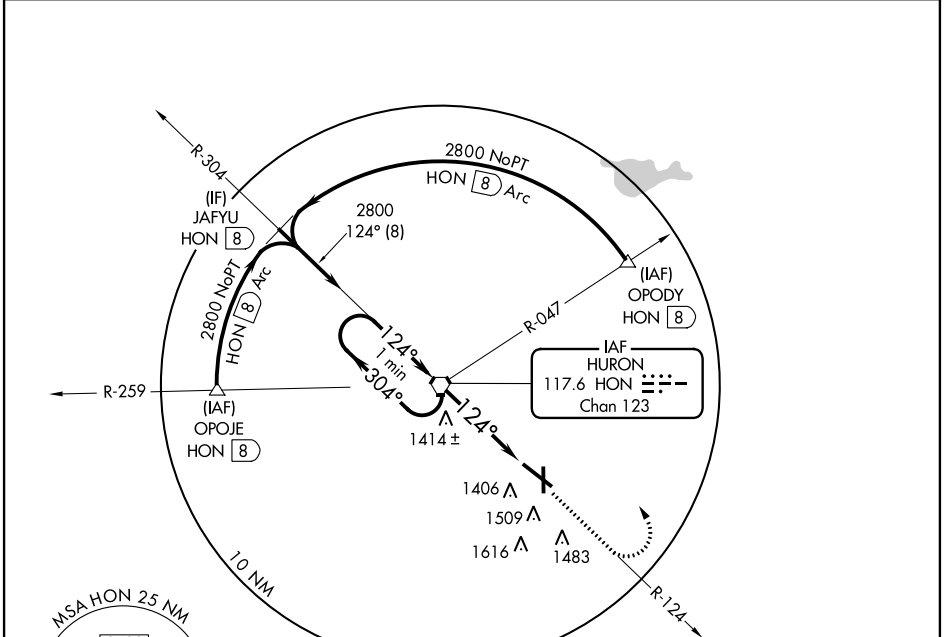
# VOR RWY 12

HURON RGNL (HON)

**⚠** When local altimeter setting not received, use Mitchell Muni altimeter setting and increase all MDA 100 feet, increase S-12 Cat C visibility ¼ mile and circling Cats C and D ¼ mile. For inoperative MALS R increase S-12 Cat D visibility 1¼ mile. VDP NA when using Mitchell Muni altimeter setting.

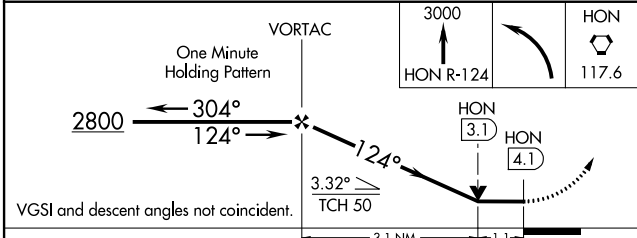
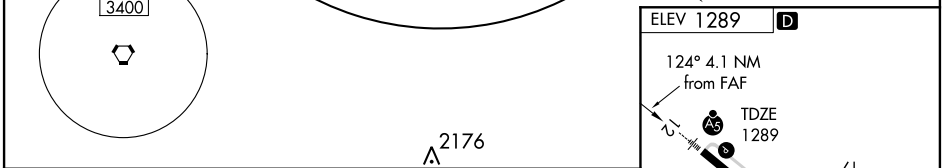
**MALS R**  MISSED APPROACH: Climb to 3000 via HON VORTAC R-124 then left turn direct HON VORTAC and hold.

ASOS <b>118,125</b>	MINNEAPOLIS CENTER <b>126.25 339.8</b>	HURON RADIO <b>123.6 (CTAF)</b>	UNICOM <b>123.0</b>
------------------------	---	------------------------------------	------------------------



NC-1, 07 FEB 2013 to 07 MAR 2013

NC-1, 07 FEB 2013 to 07 MAR 2013



CATEGORY	A	B	C	D
S-12	1680-½	391 (400-½)		1680-1 391 (400-1)
CIRCLING	1820-1	531 (600-1)	1820-1½ 531 (600-1½)	1980-2¼ 691 (700-2¼)

ELEV 1289	<b>D</b>
124° 4.1 NM from FAF	
TDZE 1289	
1316	
1339	
1354	
1397	
HIRL Rwy 12-30	
MIRL Rwy 17-35	
REIL Rwy 17, 30 and 35	
FAF to MAP 4.1 NM	
Knots	60 90 120 150 180
Min:Sec	4:06 2:44 2:03 1:38 1:22