

WAAS CH 77514 W30A	APP CRS 301°	Rwy Idg 7201 TDZE 1286 Apt Elev 1289
--	------------------------	---

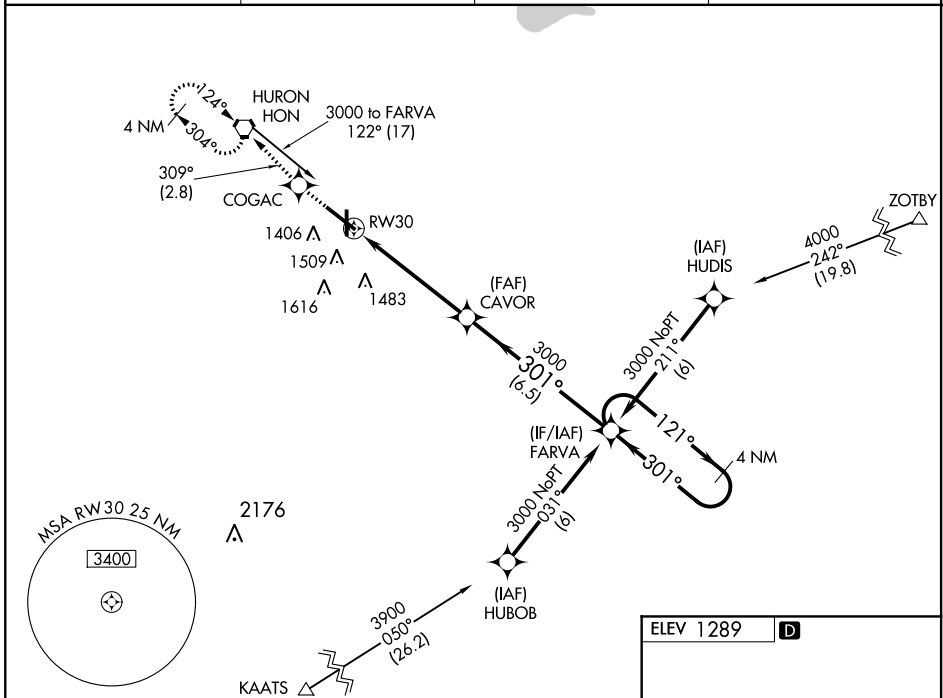
RNAV (GPS) RWY 30

HURON RGNL (HON)

▼ DME/DME RNP - 0.3 NA. When local altimeter setting not received, use Mitchell Muni altimeter setting and increase all DA 89 feet and all MDA 100 feet, increase LPV and LNAV/VNAV all Cats C/D, and Circling Cats C/D visibility ¼ mile. For uncompensated Baro-VNAV systems, LNAV/VNAV NA below -17°C (2°F) or above 46°C (114°F). Baro-VNAV NA when using Mitchell Muni altimeter setting.

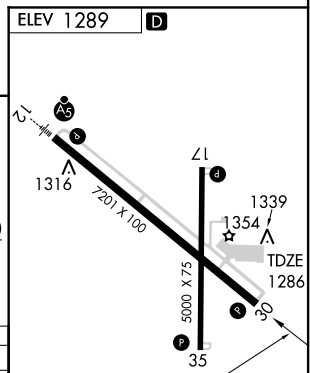
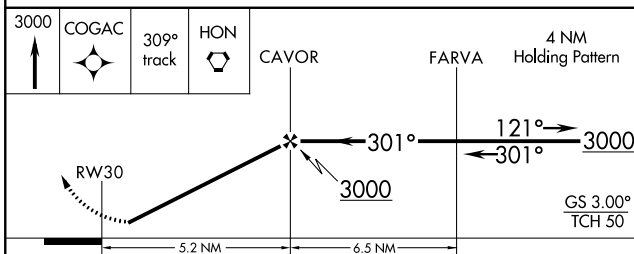
▲ MISSED APPROACH: Climb to 3000 direct COGAC and via 309° track to HON VORTAC and hold.

ASOS 118.125	MINNEAPOLIS CENTER 126.25 339.8	HURON RADIO 123.6 (CTAF)	UNICOM 123.0 U
------------------------	---	------------------------------------	---------------------------------



NC-1, 07 FEB 2013 to 07 MAR 2013

NC-1, 07 FEB 2013 to 07 MAR 2013



CATEGORY	A	B	C	D
LPV DA	1559-1 273 (300-1)			
LNAV/VNAV DA	1721-1½ 435 (500-1½)			
LNAV MDA	1760-1 474 (500-1)	1760-1½ 474 (500-1½)	1760-1½ 474 (500-1½)	1760-1½ 474 (500-1½)
CIRCLING	1820-1 531 (600-1)	1820-1½ 531 (600-1½)	1820-1½ 531 (600-1½)	1980-2¼ 691 (700-2¼)

HIRL Rwy 12-30 **U**
MIRL Rwy 17-35 **U**
REIL Rws 17, 30 and 35 **U**