

RNAV (GPS) RWY 12

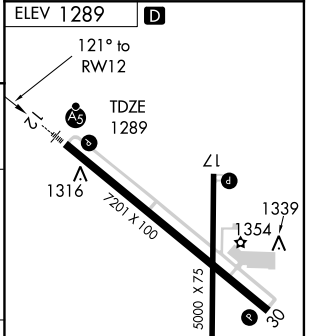
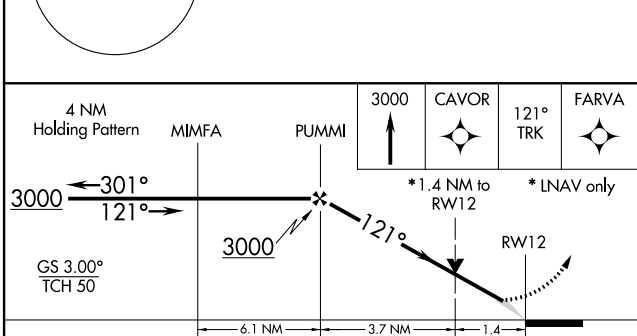
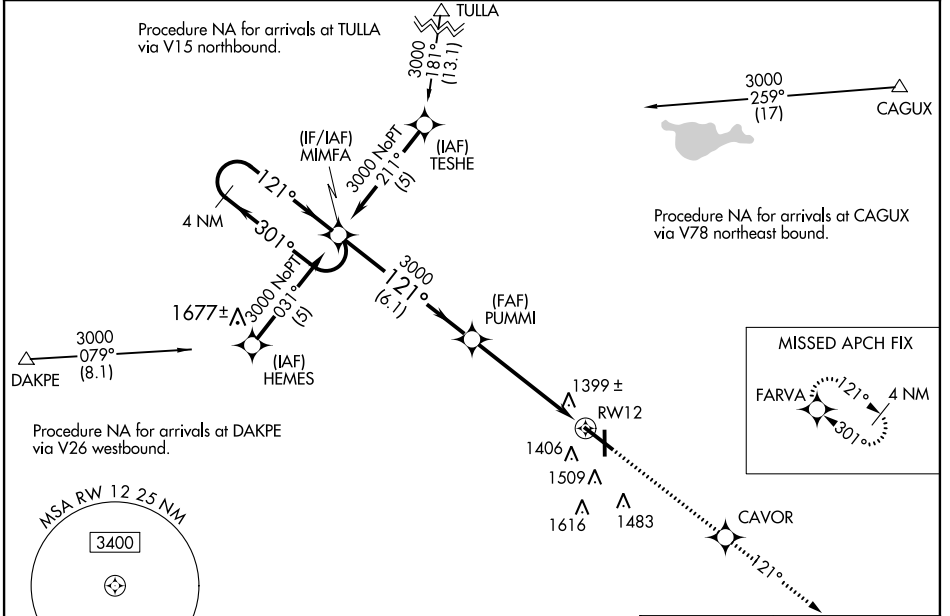
HURON RGNL (HON)

| | | | |
|--|------------------------|---|-------------|
| WAAS CH 70314 W12A | APP CRS 121° | Rwy Idg TDZE 1289 Apt Elev 1289 | 7201 |
|--|------------------------|---|-------------|


▼ For uncompensated Baro-VNAV systems, LNAV/VNAV NA below -17°C (2°F) or above 46°C (114°F). DME/DME RNP-0.3 NA. Baro-VNAV and VDP NA when using Mitchell Muni altimeter setting. When local altimeter setting not received, use Mitchell Muni altimeter setting and increase all DA 89 feet and all MDA 100 feet. Increase LNAV/VNAV all Cats, LNAV and Circling Cat C/D visibility ¼ mile. For inoperative MALSR when using Mitchell Muni altimeter setting increase LPV all Cats visibility to 1 mile.


MALSR  MISSED APPROACH: Climb to 3000 direct CAVOR and via 121° track to FARVA and hold.


| | | | |
|------------------------|---|------------------------------------|------------------------|
| ASOS 118.125 | MINNEAPOLIS CENTER 126.25 339.8 | HURON RADIO 123.6 (CTAF) | UNICOM 123.0 |
|------------------------|---|------------------------------------|------------------------|



| | | | | |
|--------------|--------------------|---|----------------------|---|
| CATEGORY | A | B | C | D |
| LPV DA | 1489-½ 200 (200-½) | | | |
| LNAV/VNAV DA | 1699-1 410 (500-1) | | 1699-1½ 410 (500-1½) | |
| LNAV MDA | 1780-½ 491 (500-½) | | 1780-¾ 491 (500-¾) | |
| CIRCLING | 1820-1 531 (600-1) | | 1820-1½ 531 (600-1½) | |
| | | | 1780-1 491 (500-1) | |
| | | | 1980-2¼ 691 (700-2¼) | |

HIRL Rwy 12-30 

MIRL Rwy 17-35 

REIL Rws 17, 30 and 35 

NC-1, 07 FEB 2013 to 07 MAR 2013

NC-1, 07 FEB 2013 to 07 MAR 2013