

LOC/DME I-HON 110.3 Chan 40	APP CRS 121°	Rwy Idg 7201 TDZE 1289 Apt Elev 1289
---	------------------------	---

ILS or LOC RWY 12

HURON RGNL (HON)

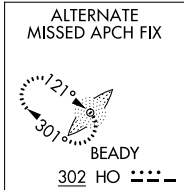
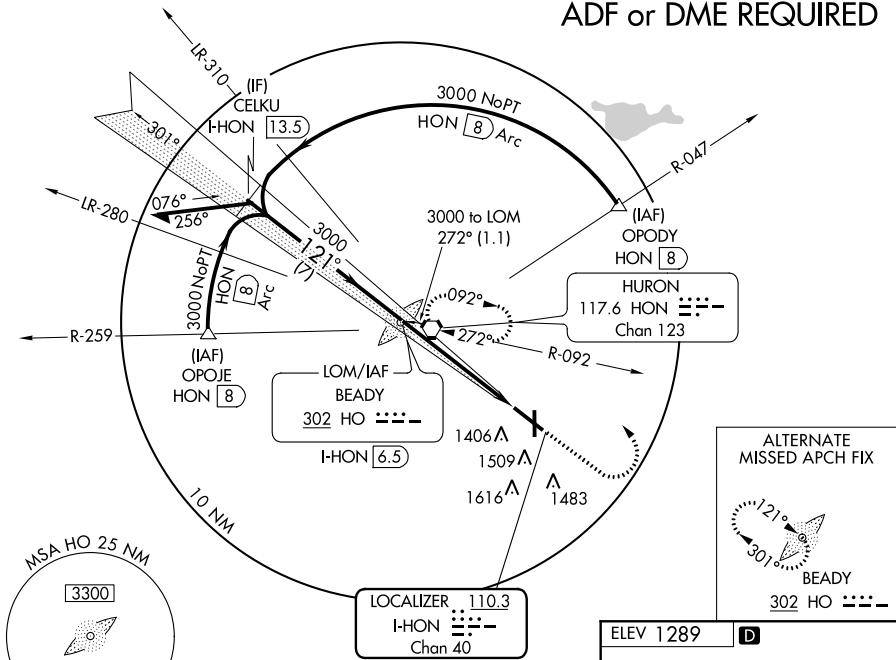
▼ For inoperative MALSR when using Mitchell altimeter setting increase S-ILS 12 all cats visibility to 1 mile. When local altimeter setting not received, use Mitchell Muni altimeter setting and ▲ increase all DA 89 feet and all MDA 100 feet, increase S-LOC 12 Cats C and D visibility ¼ mile and Circling Cats C and D ½ mile. VDP NA when using Mitchell altimeter setting.



MISSED APPROACH:
Climb to 3000 then left turn direct HON VORTAC and hold.

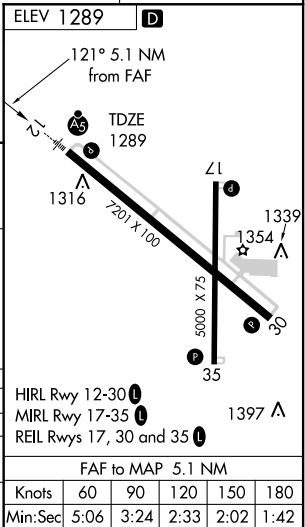
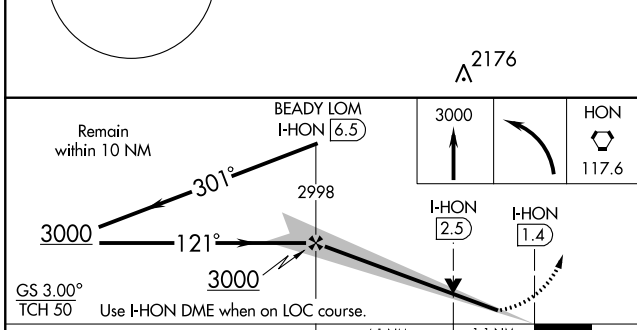
ASOS 118.125	MINNEAPOLIS CENTER 126.25 339.8	HURON RADIO 123.6 (CTAF)	UNICOM 123.0
------------------------	---	------------------------------------	------------------------

ADF or DME REQUIRED



NC-1, 07 FEB 2013 to 07 MAR 2013

NC-1, 07 FEB 2013 to 07 MAR 2013



CATEGORY	A	B	C	D
S-ILS 12		1489-½	200 (200-½)	
S-LOC 12		1680-½	391 (400-½)	1680-¾ 391 (400-¾)
CIRCLING	1820-1	531 (600-1)	1820-1½ 531 (600-1½)	1980-2¼ 691 (700-2¼)

HIRL Rwy 12-30	1397 A
MIRL Rwy 17-35	
REIL Rwy 17, 30 and 35	
FAF to MAP 5.1 NM	
Knots	60 90 120 150 180
Min:Sec	5:06 3:24 2:33 2:02 1:42