

WAAS CH 53728 R31A	APP CRS 312°	Rwy Idg THRE Apt Elev	7004 1515 1543
--	------------------------	-----------------------------	---

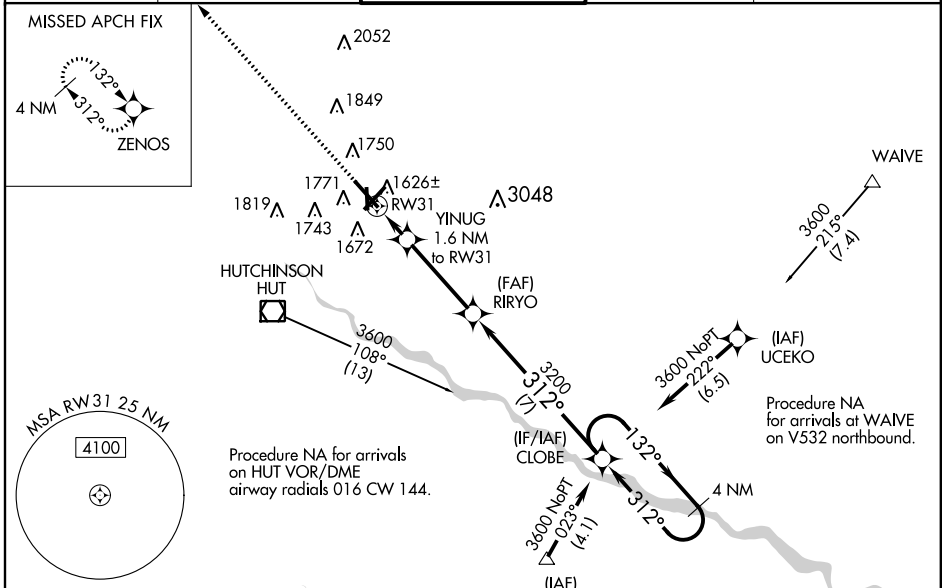
RNAV (GPS) RWY 31

HUTCHINSON MUNI (HUT)

⚠ Baro-VNAV NA when using Newton altimeter setting. For uncompensated Baro-VNAV systems, LNAV/VNAV NA below -18°C (0°F) or above 54°C (130°F). When VGSI inop, Straight-In/Circling Rwy 31 procedure NA at night. DME/DME RNP-0.3 NA. Visibility reduction by helicopters NA. When local altimeter setting not received, use Newton altimeter setting and increase all DA 66 feet and all MDA 80 feet, increase LNAV/VNAV all Cats visibility 1/8 mile, LNAV Cat C visibility 3/8 mile, and Circling Cat C visibility 1/4 mile. When VGSI inop, Circling to Rwy 17 and 22 NA at night.

MISSED APPROACH:
Climb to 3200 direct ZENOS and hold.

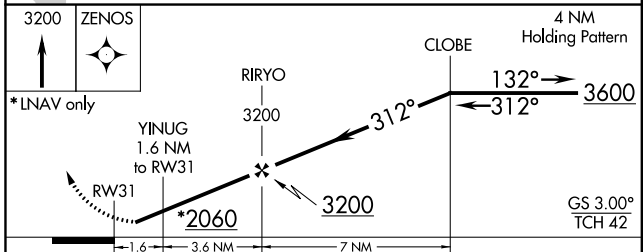
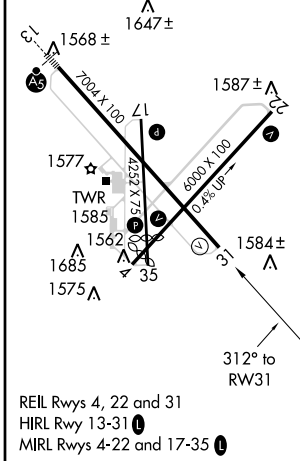
ATIS 124.25	WICHITA APP CON 125.5 306.2	HUTCHINSON TOWER * 118.5 (CTAF) 363.0	GND CON 121.9	UNICOM 122.95
-----------------------	---------------------------------------	---	-------------------------	-------------------------



NC-2, 07 FEB 2013 to 07 MAR 2013

NC-2, 07 FEB 2013 to 07 MAR 2013

ELEV 1543	D	THRE 1515
-----------	----------	-----------



CATEGORY	A	B	C	D
LPV DA		1765-1 250 (300-1)		NA
LNAV/VNAV DA		1796-1 281 (300-1)		NA
LNAV MDA		1880-1 365 (400-1)		NA
CIRCLING	2080-1	537 (600-1)	2080-1½ 537 (600-1½)	NA