

WAAS CH 50210 W13A	APP CRS 132°	Rwy Idg TDZE Apt Elev	7004 1525 1543
--	------------------------	-----------------------------	---

RNAV (GPS) RWY 13

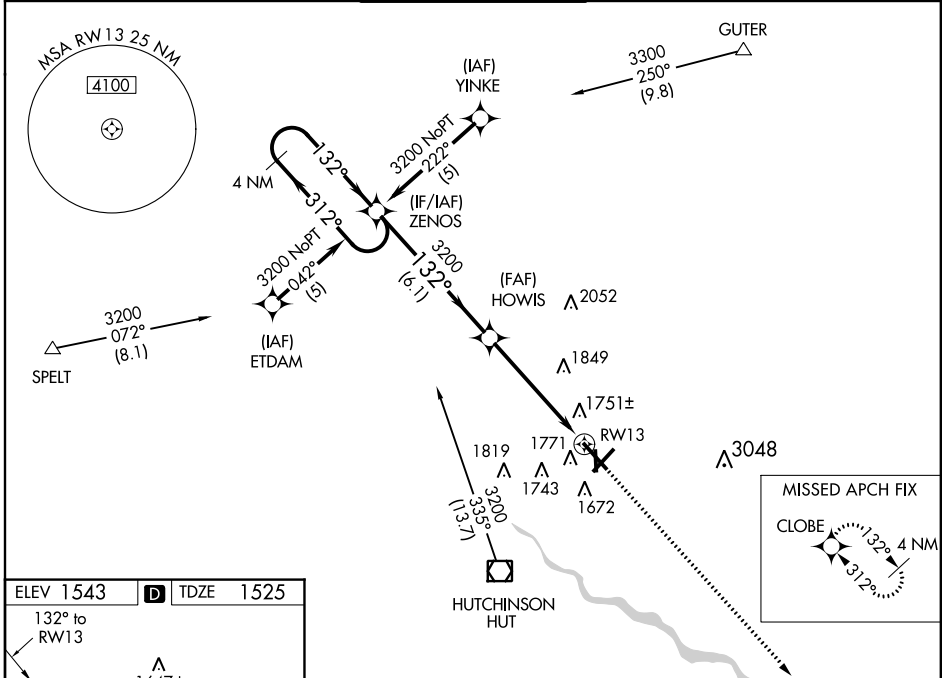
HUTCHINSON MUNI (HUT)

▼ When VGSI inop, Circling Rwy 17, 22, and 31 NA at night. For uncompensated Baro-VNAV systems, LNAV/VNAV NA below -18°C (0°F) or above 34°C (130°F). DME/DME RNP-0.3 NA. When local altimeter setting not received, use Newton altimeter setting and increase all DA 66 feet and all MDA 80 feet, increase LPV all Cats visibility ¼ mile, LNAV/VNAV all Cats visibility ½ mile, and Circling Cat C visibility ¼ mile. VDP and Baro-VNAV NA with Newton altimeter setting. For inop MALSR increase LPV visibility to 1 ½ mile all Cats; when using Newton altimeter setting, increase LPV visibility to 1 ½ mile all Cats.

MALSR

MISSED APPROACH:
Climb to 3600 direct CLOBE and hold.

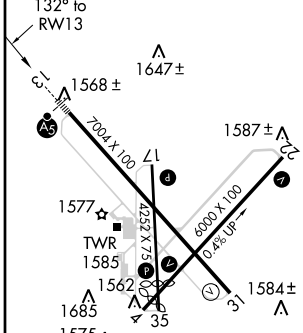
ATIS 124.25	WICHITA APP CON 125.5 306.2	HUTCHINSON TOWER * 118.5 (CTAF) 363.0	GND CON 121.9	UNICOM 122.95
-----------------------	---------------------------------------	---	-------------------------	-------------------------



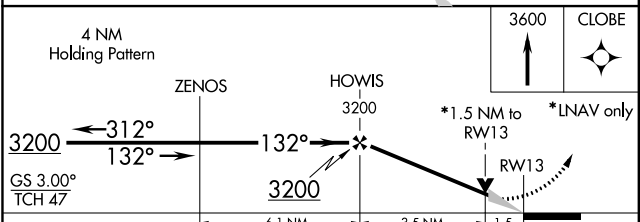
NC-2, 07 FEB 2013 to 07 MAR 2013

NC-2, 07 FEB 2013 to 07 MAR 2013

ELEV 1543	D	TDZE 1525
-----------	----------	-----------



REIL Rws 4, 22 and 31
HIRL Rwy 13-31
MIRL Rws 4-22 and 17-35



CATEGORY	A		B		C		D	
	LPV	DA	LPV	DA	LPV	DA	DA	
LPV	DA	1856/40	331	400-¾			NA	
LNAV/VNAV	DA	2077-1½	552	600-1½			NA	
LNAV MDA		2040/24	515	500-½	2040/50	515	500-1	NA
CIRCLING		2080-1	537	600-1	2080-1½	537	600-1½	NA