

LOC I-HUT <b>110.1</b>	APP CRS <b>132°</b>	Rwy Idg THRE Apt Elev	<b>7004</b> <b>1525</b> <b>1543</b>
---------------------------	------------------------	-----------------------------	---

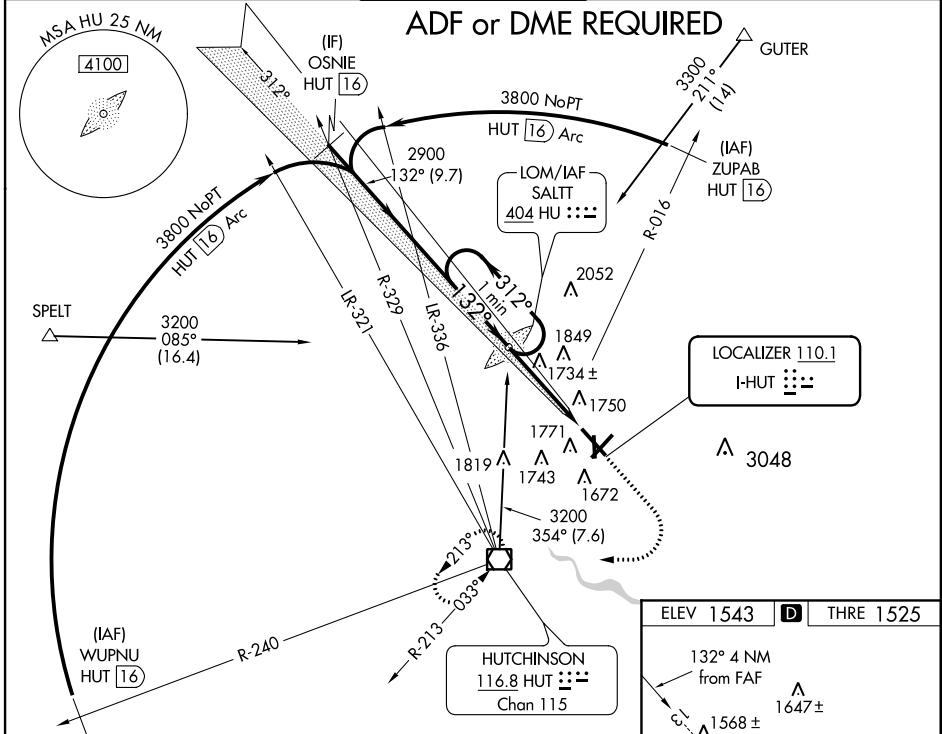
# ILS or LOC RWY 13

HUTCHINSON MUNI (HUT)

▼ \*RVR 1800 authorized with use of FD or AP or HUD to DA.  
▲ When VGSi inop, Circling Rwy 17, 22, and 31 NA at night.  
▲ When local altimeter setting not received, use Newton altimeter setting and increase all DA 66 feet and all MDA 80 feet, increase S-LOC Cat C visibility to RVR 6000 and increase Circling Cat C visibility to 1 3/4 mile.

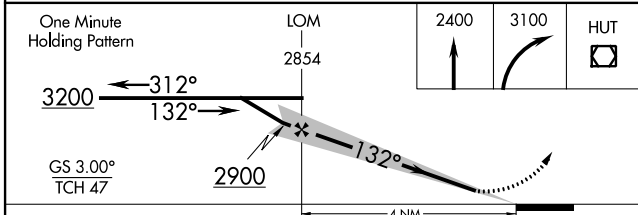
**MALSR** MISSED APPROACH: Climb to 2400 then climbing right turn to 3100 direct HUT VOR/DME and hold.

ATIS <b>124.25</b>	WICHITA APP CON <b>125.5 306.2</b>	HUTCHINSON TOWER * <b>118.5 (CTAF) 363.0</b>	GND CON <b>121.9</b>	UNICOM <b>122.95</b>
-----------------------	---------------------------------------	---	-------------------------	-------------------------



NC-2, 07 FEB 2013 to 07 MAR 2013

NC-2, 07 FEB 2013 to 07 MAR 2013



ELEV 1543	THRE 1525
-----------	-----------

132° 4 NM from FAF

1568 ±

1647 ±

700 X 100

600 X 100

0.4% UP

TWR 1577

1585

1584 ±

1588 ±

1575

1685

35

REIL Rwys 4, 22 and 31

HIRL Rwy 13-31

MIRL Rwys 4-22 and 17-35

FAF to MAP 4 NM

Knots	60	90	120	150	180
Min:Sec	4:00	2:40	2:00	1:36	1:20

CATEGORY	A	B	C	D
S-ILS 13*	1725/24 200 (200-1/2)			NA
S-LOC 13	2000/24	475 (500-1/2)	2000/50 475 (500-1)	NA
CIRCLING	2080-1	537 (600-1)	2080-1 1/2 537 (600-1 1/2)	NA