

HOUSTON, TEXAS

AL-198 (FAA)

VOR/DME-E

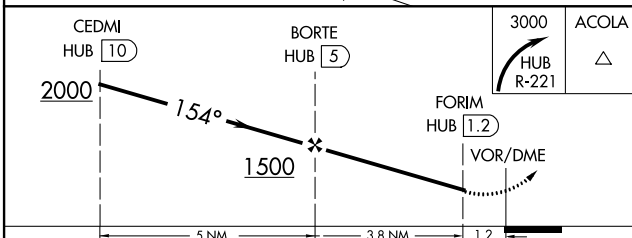
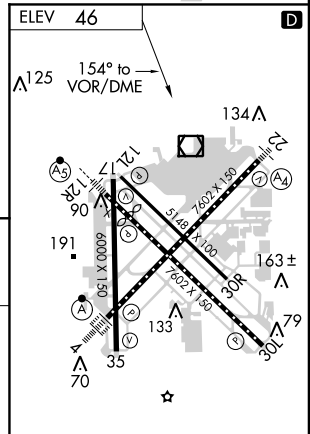
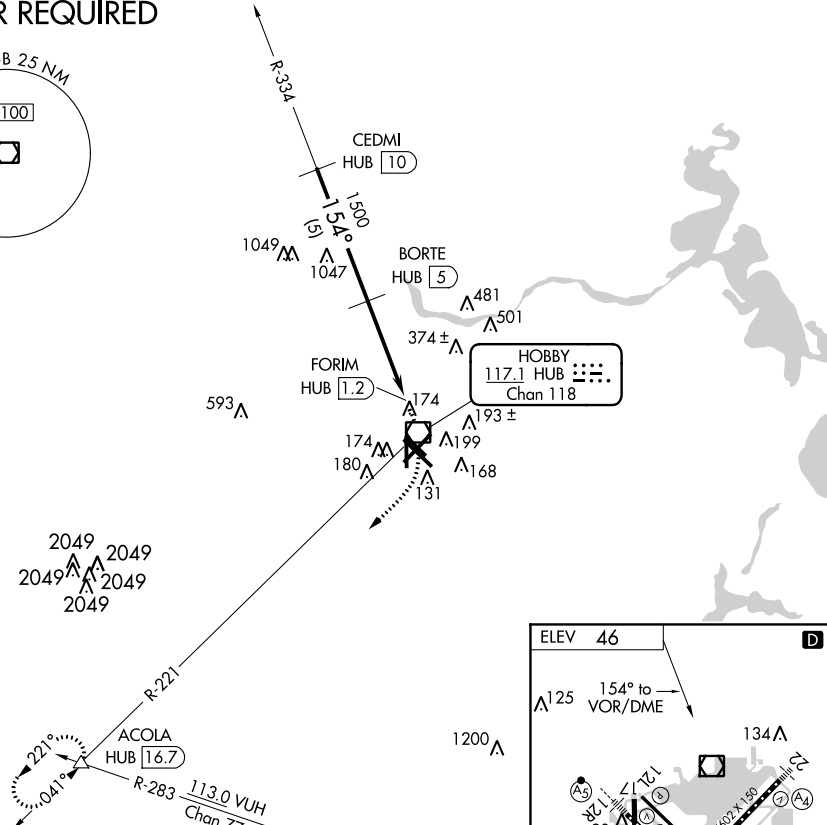
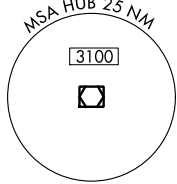
HOUSTON/WILLIAM P. HOBBY (HOU)

VOR/DME HUB 117.1 Chan 118	APP CRS 154°	Rwy Idg TDZE Apt Elev	N/A N/A 46
--	------------------------	-----------------------------	---------------------------------------

MISSED APPROACH: Climbing right turn to 3000 via HUB R-221 to ACOLA Int/HUB 16.7 DME and hold.

ATIS 124.6	HOUSTON APP CON 120.05 379.1 EAST 124.35 316.15 WEST	HOBBY TOWER 118.7 256.9	GND CON 121.9	CLNC DEL 125.45
----------------------	--	-----------------------------------	-------------------------	---------------------------

RADAR REQUIRED



CATEGORY	A	B	C	D
CIRCLING	600-1¾	554(600-1¾)		600-2 554 (600-2)

TDZ/CL Rwy 4, 12R and 30L
REIL Rwy 30L and 35
HIRL Rwy 4-22 and 12R-30L
MIRL Rwy 12L-30R and 17-35

SC-5, 07 FEB 2013 to 07 MAR 2013

SC-5, 07 FEB 2013 to 07 MAR 2013

HOUSTON, TEXAS
Orig 13010

29°39'N-95°17'W

HOUSTON/WILLIAM P. HOBBY (HOU)
VOR/DME-E