

VOR/DME HUB 117.1 Chan 118	APP CRS 325°	Rwy Idg 7602 THRE 42 Apt Elev 46
--	------------------------	---

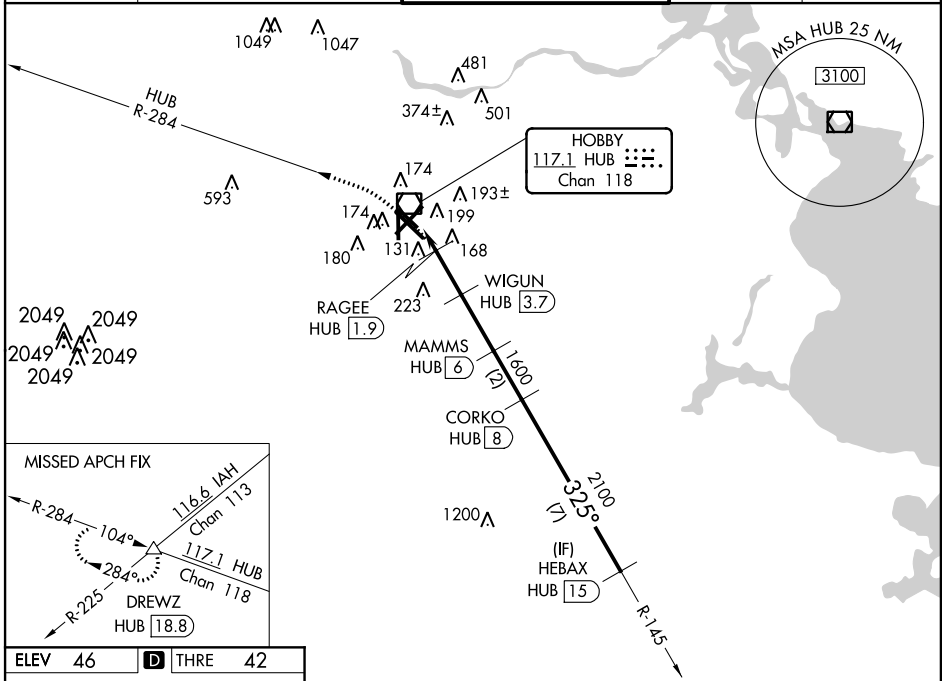
VOR/DME RWY 30L

HOUSTON/ WILLIAM P. HOBBY (HOU)

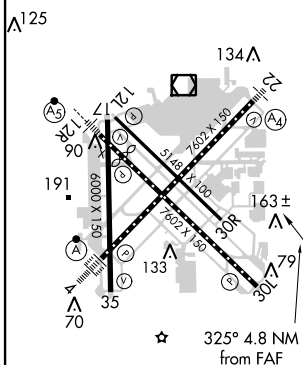
▽
▲

MISSED APPROACH: Climbing left turn to 2000 via HUB R-284 direct DREWZ INT/HUB 18.8 DME and hold.

ATIS 124.6	HOUSTON APP CON 120.05 379.1 EAST 124.35 316.15 WEST	HOBBY TOWER 118.7 256.9	GND CON 121.9	CLNC DEL 125.45
----------------------	--	-----------------------------------	-------------------------	---------------------------



ELEV 46	D	THRE 42
---------	----------	---------

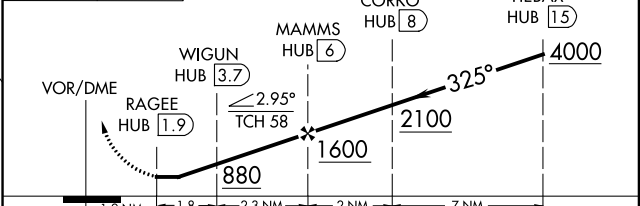


TDZ/CL Rwy 4, 12R and 30L
REIL Rwy 30L and 35
HIRL Rwy 4-22 and 12R-30L
MIRL Rwy 12L-30R and 17-35

2000
HUB R-284

DREWZ
▲

VGSI and descent angles not coincident (VGSI Angle 3.00/TCH 71).



CATEGORY	A	B	C	D	E
S-30L	440/55	398 (400-1¼)	440/60	398 (400-1¼)	
CIRCLING	500-1	454 (500-1)	520-1½ 474 (500-1½)	600-2 554 (600-2)	860-3 814 (900-3)

SC-5, 07 FEB 2013 to 07 MAR 2013

SC-5, 07 FEB 2013 to 07 MAR 2013