

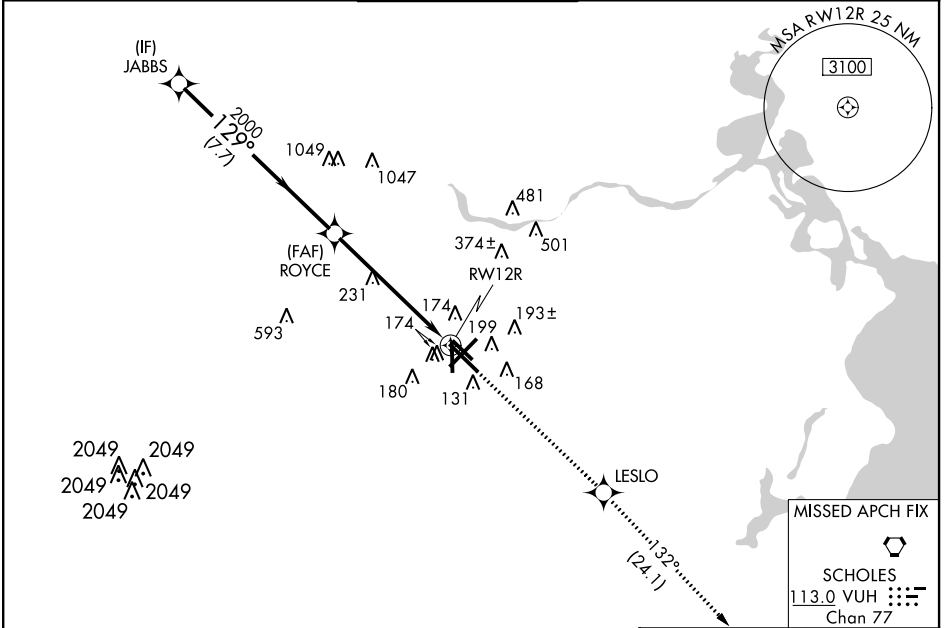
WAAS CH <b>70310</b> <b>W12A</b>	APP CRS <b>129°</b>	Rwy Idg <b>6568</b> TDZE <b>46</b> Apt Elev <b>46</b>
--	------------------------	---

# RNAV (GPS) RWY 12R

HOUSTON/ WILLIAM P. HOBBY (HOU)

<p><b>⚠</b> For inoperative MALSR, increase LPV all Cats visibility to RVR 5000, LNAV/VNAV Cat E visibility to 1½, and LNAV Cat A and B visibility to RVR 5000, Cat E to 1½. For uncompensated Baro-VNAV systems, LNAV/VNAV NA below 15°C (5°F) or above 49°C (120°F). DME/DME RNP-0.30 NA. Visibility reduction by helicopters NA.</p>	<p>MALSR</p>	<p>MISSED APPROACH: Climb to 2200 direct LESLO and on track 132° to VUH VORTAC.</p>
	<p>ATIS <b>124.6</b></p> <p>HOUSTON APP CON <b>120.05 379.1</b> EAST <b>124.35 316.15</b> WEST</p> <p>HOBBY TOWER <b>118.7 256.9</b></p> <p>GND CON <b>121.9</b></p> <p>CLNC DEL <b>125.45</b></p>	

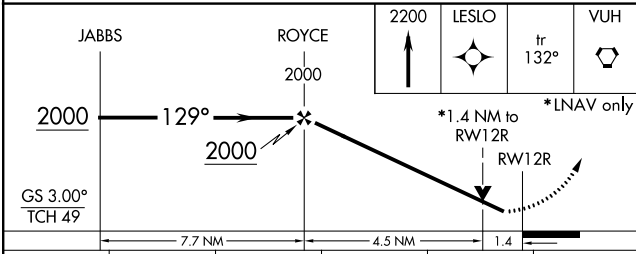
ATIS <b>124.6</b>	HOUSTON APP CON <b>120.05 379.1</b> EAST <b>124.35 316.15</b> WEST	HOBBY TOWER <b>118.7 256.9</b>	GND CON <b>121.9</b>	CLNC DEL <b>125.45</b>
----------------------	--	-----------------------------------	-------------------------	---------------------------



SC-5, 07 FEB 2013 to 07 MAR 2013

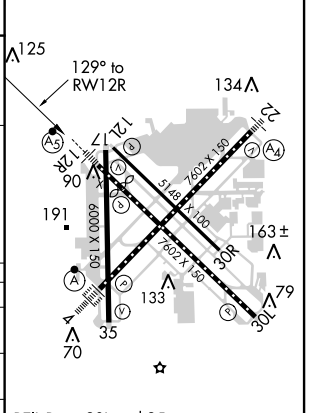
SC-5, 07 FEB 2013 to 07 MAR 2013

## RADAR REQUIRED



ELEV 46	<b>D</b> TDZE 46
---------	------------------

CATEGORY	A	B	C	D	E
LPV DA	330/40		284 (300-¾)		
LNAV/VNAV DA	475/50		429 (500-1)		
LNAV MDA	540/40	494 (500-¾)	540/50 494 (500-1)	540/60 494 (500-1¼)	
CIRCLING	540-1½	494 (500-1½)	600-2 554 (600-2)	860-3 814 (900-3)	



REIL Rwy 30L and 35  
HIRL Rwy 4-22 and 12R-30L  
MIRL Rwy 12L-30R and 17-35  
TDZ/CL Rwy 4, 12R and 30L