

PALACIOS FOUR DEPARTURE

SL-198 (FAA)

HOUSTON/ WILLIAM P. HOBBY (HOU)
HOUSTON, TEXAS

SC-5, 07 FEB 2013 to 07 MAR 2013

ATIS 124.6
CLNC DEL 125.45
GND CON 121.9
HOBBY TOWER 118.7 256.9
HOUSTON DEP CON 127.125 269.075

TAKE-OFF MINIMUMS:

- Rwy 12L, 12R, 30L, 30R, 35, Standard.
- Rwy 4, 300-1 or Standard with minimum climb of 270' per NM to 300.
- Rwy 17, 300-1.
- Rwy 22, Standard with minimum climb of 290' per NM to 1500.

FORT STOCKTON
116.9 FST
Chan 116
N30°57.13'
W102°58.54'
L-19, H-6

SAN ANTONIO
116.8 SAT
Chan 115
N29°38.64' - W98°27.68'
L-19, H-7

EAGLE LAKE
116.4 ELA
Chan 111

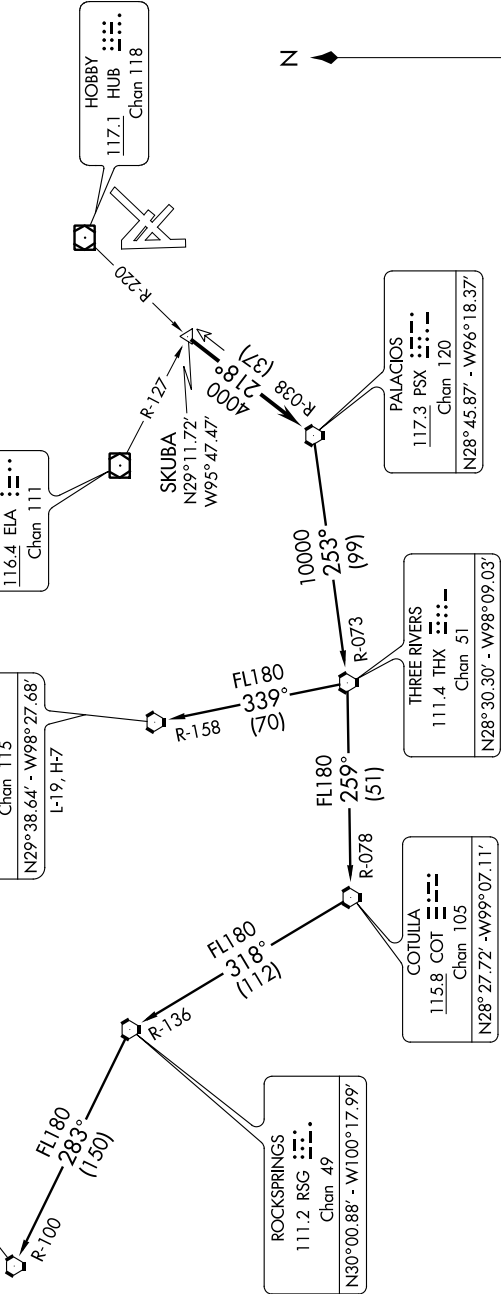
HOBBY HUB
117.1 HUB
Chan 118

ROCKSPRINGS
111.2 RSG
Chan 49
N30°00.88' - W100°17.99'

COTUILA
115.8 COT
Chan 105
N28°27.72' - W99°07.11'

THREE RIVERS
111.4 THX
Chan 51
N28°30.30' - W98°09.03'

PALACIOS
117.3 PSX
Chan 120
N28°45.87' - W96°18.37'



NOTE: RADAR Required
NOTE: Chart not to scale

(NARRATIVE ON FOLLOWING PAGE)

SC-5, 07 FEB 2013 to 07 MAR 2013

PALACIOS FOUR DEPARTURE