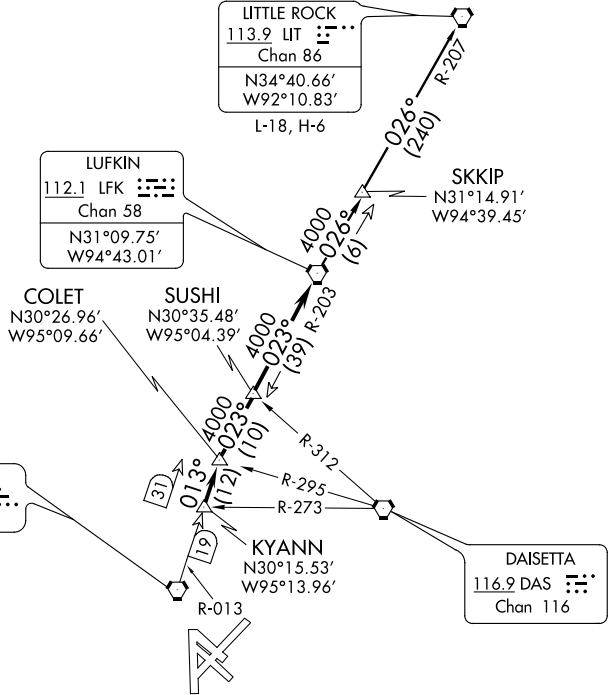


LUFKIN SIX DEPARTURE

SL-198 (FAA)

HOUSTON/ WILLIAM P. HOBBY (HOU)
HOUSTON, TEXAS

ATIS 124.6
CLNC DEL
125.45
GND CON
121.9
HOBBY TOWER
118.7 256.9
HOUSTON DEP CON
132.25 285.425



NOTE: RADAR Required.
NOTE: For aircraft destined LIT,
or overflying LIT or PXV.

TAKE-OFF MINIMUMS:
Rwy 12L, 12R, 30L, 30R, 35, Standard.
Rwy 4, 300-1 or Standard with minimum
climb of 270 ft per NM to 300.
Rwy 17, 300-1.
Rwy 22, Standard with minimum climb
of 290 ft per NM to 1500.

(NARRATIVE ON FOLLOWING PAGE)

NOTE: Chart not to scale.

DEPARTURE ROUTE DESCRIPTION

Climb on assigned heading for radar vectors to KYANN INT, maintain 5000.
Expect filed altitude 10 minutes after departure, Thence

. . . . via IAH R-013 to COLET INT, then right turn via LFK R-203 to LFK VORTAC.

LITTLE ROCK TRANSITION (LFK6.LIT): From over LFK VORTAC via LFK R-026
to SKKIP INT, then via LFK R-026 and LIT R-207 to LIT VORTAC.

SC-5, 07 FEB 2013 to 07 MAR 2013

SC-5, 07 FEB 2013 to 07 MAR 2013