

HOUSTON, TEXAS

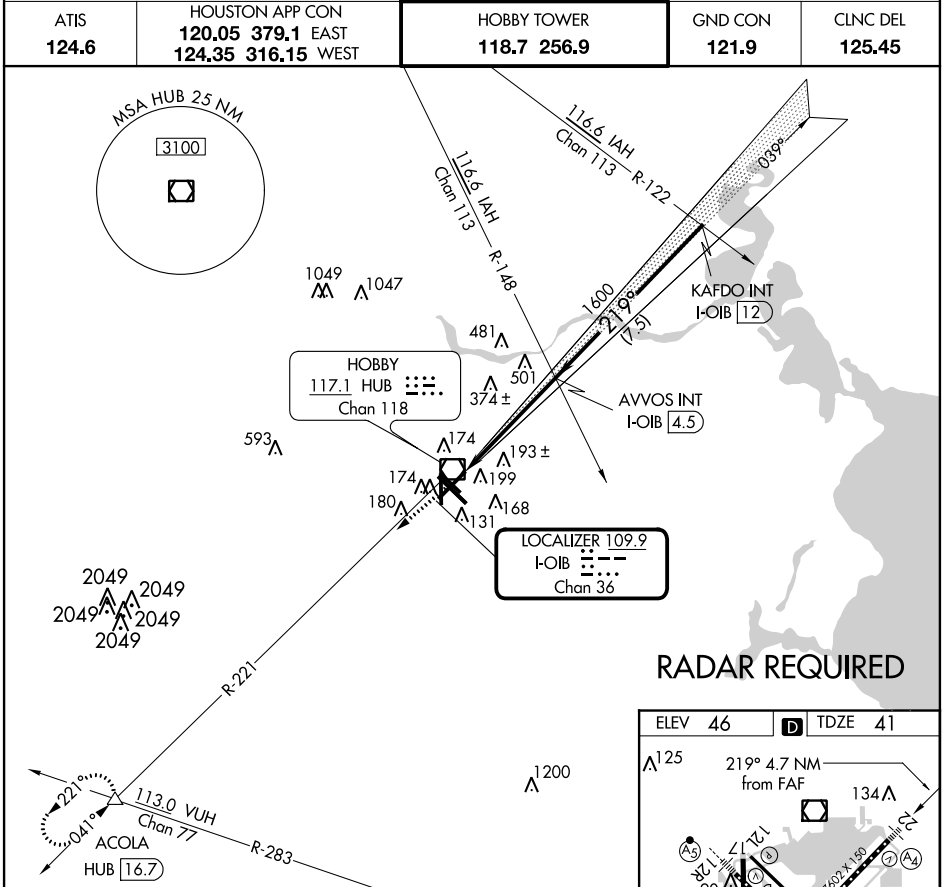
AL-198 (FAA)

# LOC RWY 22

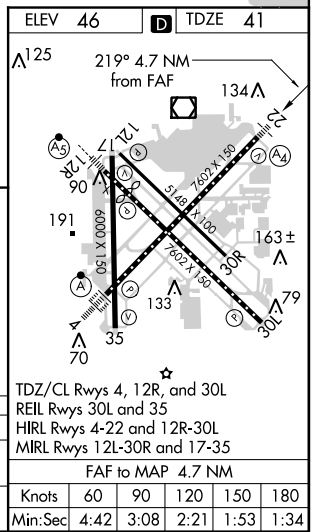
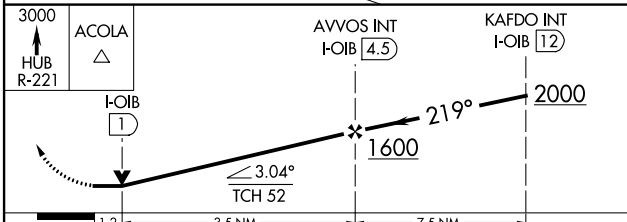
HOUSTON/WILLIAM P. HOBBY (HOU)

LOC I-OIB <b>109.9</b> Chan <b>36</b>	APP CRS <b>219°</b>	Rwy Idg TDZE <b>41</b> Apt Elev <b>46</b>	<b>7602</b>
---	------------------------	---	-------------

<p>Inoperative table does not apply to Cat C.</p>	<p>MALS</p>	<p>MISSED APPROACH: Climb to 3000 via HUB VOR/DME R-221 to ACOLA Int/HUB 16.7 DME and hold.</p>		
	<p>ATIS <b>124.6</b></p>	<p>HOUSTON APP CON <b>120.05 379.1</b> EAST <b>124.35 316.15</b> WEST</p>	<p>HOBBY TOWER <b>118.7 256.9</b></p>	<p>GND CON <b>121.9</b></p>



**RADAR REQUIRED**



SC-5, 07 FEB 2013 to 07 MAR 2013

SC-5, 07 FEB 2013 to 07 MAR 2013

HOUSTON, TEXAS  
Amdt 1 13010

29°39'N-95°17'W

HOUSTON/WILLIAM P. HOBBY (HOU)  
**LOC RWY 22**