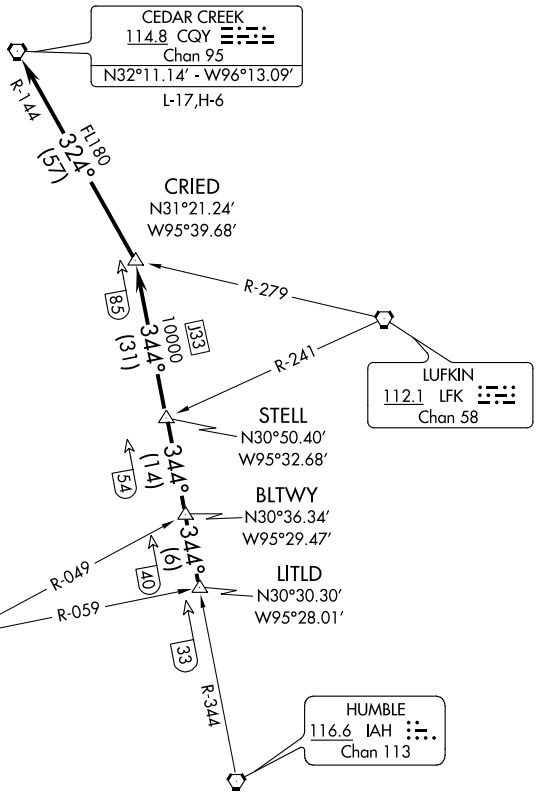


CRIED FOUR DEPARTURE

SL-198 (FAA)

HOUSTON/ WILLIAM P. HOBBY (HOU)
HOUSTON, TEXAS

ATIS 124.6
CLNC DEL
125.45
GND CON
121.9
HOBBY TOWER
118.7 256.9
HOUSTON DEP CON
132.25 285.425



NOTE: RADAR Required.

NAVASOTA
115.9 TNV
Chan 106

CEDAR CREEK
114.8 CQY
Chan 95
N32°11.14' - W96°13.09'
L-17,H-6

CRIED
N31°21.24'
W95°39.68'

LUFKIN
112.1 LFK
Chan 58

STELL
N30°50.40'
W95°32.68'

BLTWY
N30°36.34'
W95°29.47'

LITLD
N30°30.30'
W95°28.01'

HUMBLE
116.6 IAH
Chan 113



SC-5, 07 FEB 2013 to 07 MAR 2013

SC-5, 07 FEB 2013 to 07 MAR 2013

TAKE-OFF MINIMUMS:

- Rwy 12L, 12R, 30L, 30R, 35, Standard.
- Rwy 4, 300-1 or standard with minimum climb of 270' per NM to 300.
- Rwy 17, 300-1.
- Rwy 22, Standard with minimum climb of 290' per NM to 1500.

(NOTES CONTINUED ON FOLLOWING PAGE)

NOTE: Chart not to scale.



DEPARTURE ROUTE DESCRIPTION

Climb on assigned heading for radar vectors to LITLD INT, maintain 5000.
Expect filed altitude 10 minutes after departure, thence

. . . . via IAH R-344 to STELL INT, then via IAH R-344 to CRIED INT, then left turn via CQY R-144 to CQY VORTAC.