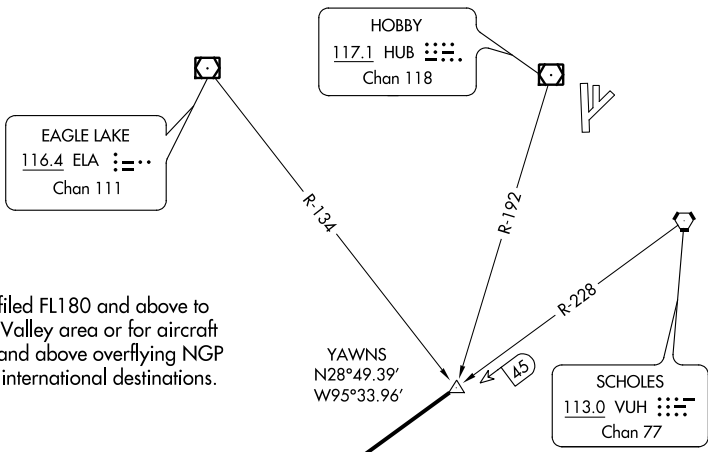


ATIS
135.575 269.9
GND CON
121.6 275.8
ELLINGTON TOWER
126.05 253.5
HOUSTON DEP CON
134.45 284.0



Note: For aircraft filed FL180 and above to Rio Grande Valley area or for aircraft filed FL180 and above overflying NGP VORTAC to international destinations.

TRUAX
114.0 NGP
Chan 87
N27°41.18' - W97°17.69'
L-20-21

TAKE-OFF MINIMUMS:
Rwy 4, 17R, 17L, 22, 35R, 35L standard.

TAKE-OFF OBSTACLES:
Rwy 17R, Pole 1489' from DER, 817' right of centerline, 40' AGL/74' MSL.
Rwy 22, Obstruction light on glideslope, 327' from DER, 543' left of centerline, 39' AGL/ 68' MSL. Antenna on building, 1998' from DER, 598' right of centerline, 54' AGL/83 MSL.
Rwy 35R, Tree 1597' from DER, 32' left of centerline, 33' AGL/80' MSL.
Rwy 35L, Multiple trees beginning 1118' from DER, 679' right of centerline, up to 37' AGL/77' MSL. Crane 2352' from DER, 1024' left of centerline, 37' AGL/97' MSL.

NOTE: Chart not to scale.

NOTE: Radar Required.

DEPARTURE ROUTE DESCRIPTION

Expect vectors to YAWNS INT, maintain 4000', expect filed altitude 10 minutes after departure. Thence. . . .

. . . . via VUH R-228 and NGP R-047 to NGP VORTAC.