

TACAN EFD Chan 31	APP CRS 163°	Rwy Idg THRE 31 Apt Elev 32
-----------------------------	------------------------	---

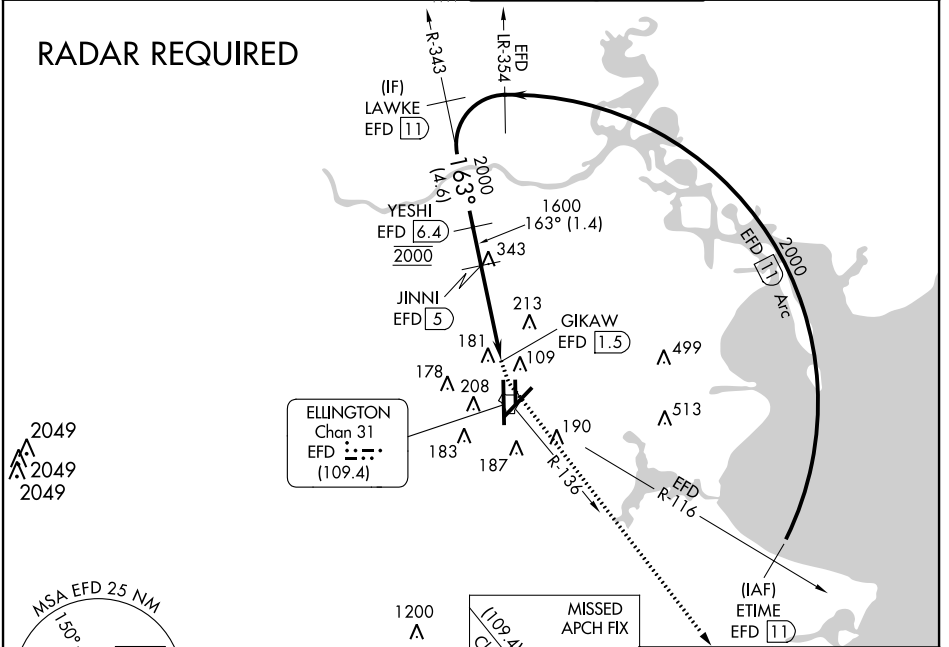
TACAN RWY 17R

HOUSTON/ELLINGTON (EFD)

NA When ALS inop, increase visibility Cat A/B to RVR 5500 and Cat C/D/E visibility to 1½ miles. Circling NA west of Rwy 17R-35L.	MALSF EFD	MISSED APPROACH: Climbing left turn to 3100 on EFD TACAN R-136 to WATFO/EFD 16 DME and hold.

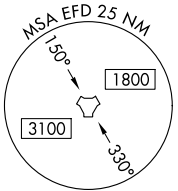
ATIS 135.575 269.9	HOUSTON APP CON 134.45 284.0	ELLINGTON TOWER 126.05 253.5	GND CON 121.6 275.8
------------------------------	--	--	-------------------------------

RADAR REQUIRED



SC-5, 07 FEB 2013 to 07 MAR 2013

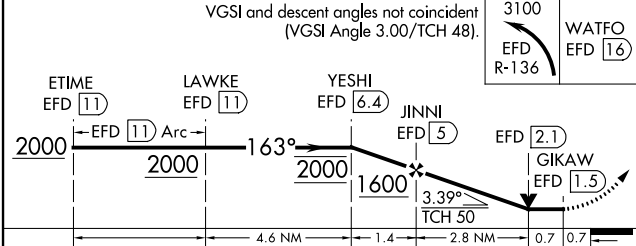
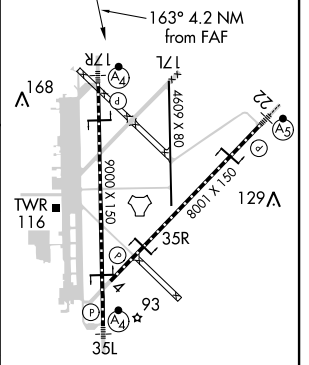
SC-5, 07 FEB 2013 to 07 MAR 2013



ESA W/IN 100 NM 16000



ELEV 32	D	THRE 31
---------	----------	---------



CATEGORY	A	B	C	D	E
S-17R	500/40	469 (500-¾)	500/60 469 (500-1¼)		
CIRCLING	500-1	468 (500-1)	500-1½ 468 (500-1½)	600-2 568 (600-2)	660-2¼ 628 (700-2¼)

HIRL Rwy 4-22 and 17R-35L
TDZ/CL Rwy 17R, 22 and 35L