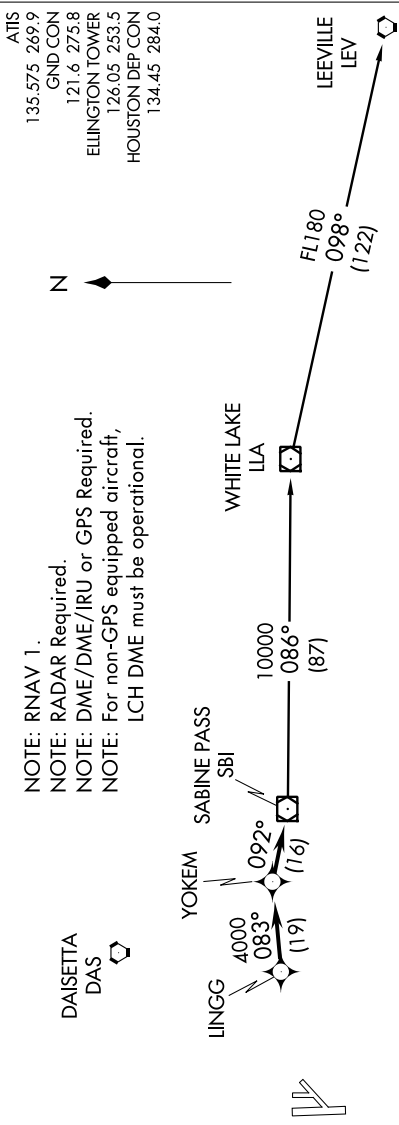


SC-5, 07 FEB 2013 to 07 MAR 2013



NOTE: RNAV 1.
NOTE: RADAR Required.
NOTE: DME/DME/IRU or GPS Required.
NOTE: For non-GPS equipped aircraft, LCH DME must be operational.

DAISETTA
DAS

TAKE-OFF MINIMUMS:
Rwy 4, 17L, 17R, 22, 35L, 35R,
ATC climb of 280' per NM to 4000.

DEPARTURE ROUTE DESCRIPTION

Climb on assigned heading for radar vectors to LINGG INT, maintain 4000. Thence

. . . . (transition). Expect filed altitude 10 minutes after departure on depicted route to SBI VOR/DME.

LEEVILLE TRANSITION: (SBI2.LEV)
WHITE LAKE TRANSITION: (SBI2.LLA)

TAKE-OFF OBSTACLES:
Rwy 17R: Pole 1489' from DER, 817' right of centerline, 40' AGL/74' MSL.
Rwy 22: Antenna on building 1998' from DER, 598' right of centerline, 54' AGL/83' MSL.
OL on GS 327' from DER, 543' left of centerline, 39' AGL/ 68' MSL.
Rwy 35L: Multiple trees beginning 1118' from DER, 679' right of centerline, up to 37' AGL/77' MSL.
Rwy 35R: Crane 2352' from DER, 1024' left of centerline, 37' AGL/57' MSL.
Tree 1597' from DER, 32' left of centerline, 33' AGL/80' MSL.

SC-5, 07 FEB 2013 to 07 MAR 2013