


WAAS CH <b>61111</b> <b>W22A</b>	APP CRS <b>219°</b>	Rwy Idg THRE Apt Elev <b>33</b>	<b>8001</b> <b>30</b> <b>33</b>
----------------------------------------	------------------------	------------------------------------------	---------------------------------------

# RNAV (GPS) RWY 22

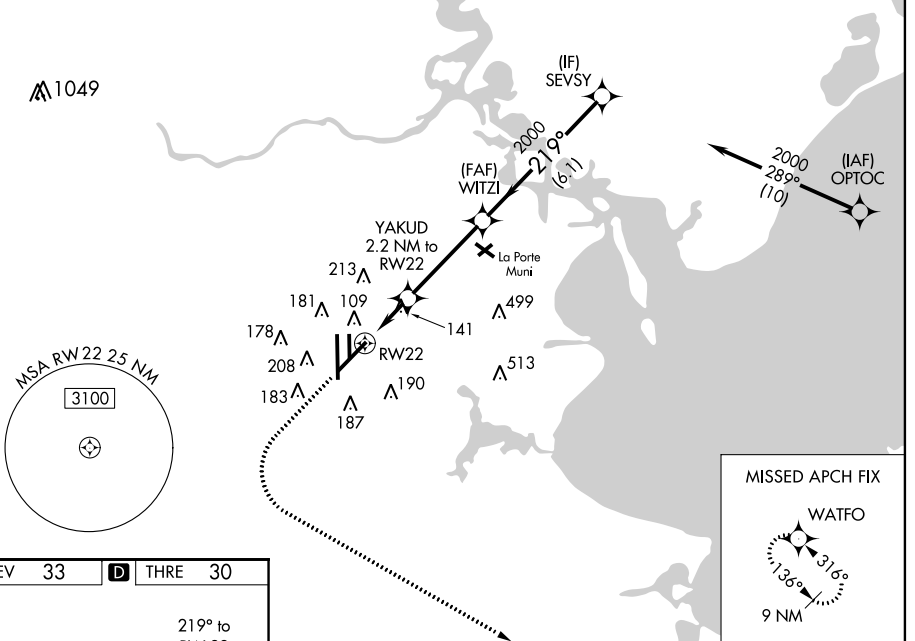
HOUSTON/ELLINGTON (E,F,D)

**▼** For uncompensated Baro-VNAV systems, LNAV/VNAV NA below -15°C (5°F) or above 54°C (130°F). DME/DME RNP-0.3 NA. Circling NA west of Rwy 17R-35L.  
**▲** For inop MALS, increase LPV Cat E visibility to RVR 4000, LNAV/VNAV Cat E visibility to RVR 5000 and LNAV Cats C, D and E visibility to RVR 5000.

**MALS**  
  
**MISSED APPROACH:**  
 Climb to 500 then climbing left turn to 3100 direct WATFO and hold.

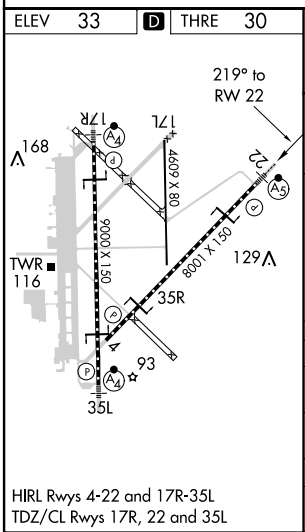
ATIS <b>135.575 269.9</b>	HOUSTON APP CON <b>134.45 284.0</b>	ELLINGTON TOWER <b>126.05 253.5</b>	GND CON <b>121.6 275.8</b>
------------------------------	----------------------------------------	----------------------------------------	-------------------------------


## RADAR REQUIRED



SC-5, 07 FEB 2013 to 07 MAR 2013

SC-5, 07 FEB 2013 to 07 MAR 2013



**MISSED APCH FIX**  
  
 WATFO  
 9 NM

500 3100 WATFO  
 VGSJ and RNAV glidepath not coincident (VGSJ Angle 3.00/TCH 50).

\*LNAV only

YAKUD 2.2 NM to RW22

\*1 NM to RW22

WITZI 2000

SEVSY 2000

219°

2000

GS 3.00° TCH 54

	1.0	1.2 NM	3.8 NM	6.1 NM	
CATEGORY	A	B	C	D	E
LPV	DA	230/24	200 (200-½)		
LNAV/VNAV	DA	340/24	310 (400-½)		
LNAV MDA	400/24	370 (400-½)	400/35	370 (400-¾)	
CIRCLING	500-1	468 (500-1)	500-1½ 468 (500-1½)	600-2 568 (600-2)	660-2¼ 628 (700-2¼)

HOUSTON, TEXAS  
 Andt 2A 15NOV12

29°36'N-95°10'W

# HOUSTON/ELLINGTON (E,F,D) RNAV (GPS) RWY 22