

WAAS CH 70625 W17A	APP CRS 174°	Rwy Idg THRE 31 Apt Elev 32	9000
--	------------------------	--	-------------

RNAV (GPS) RWY 17R

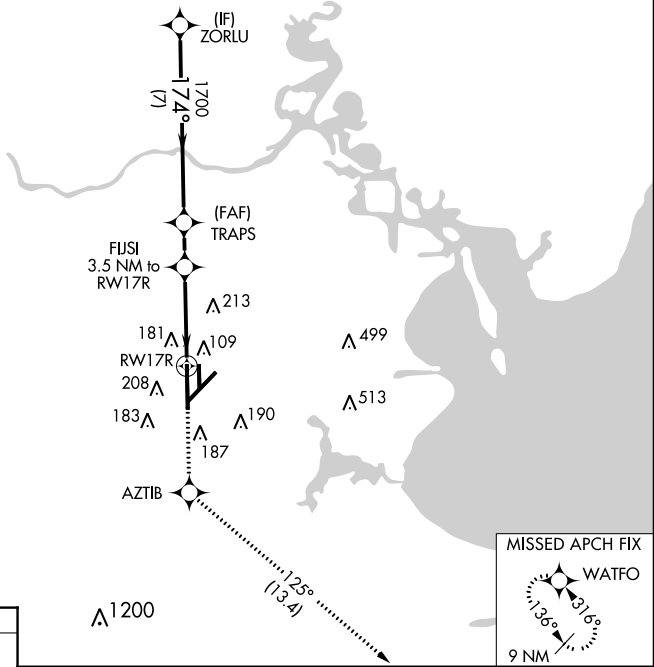
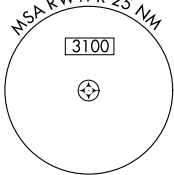
HOUSTON/ELLINGTON (E/FD)

▼ For uncompensated Baro-VNAV systems, LNAV/VNAV NA below -1.5°C (5°F) or above 43°C (109°F). DME/DME RNP-0.3 NA. Inop table does not apply to LPV DA. For inop MALSF, increase LNAV/VNAV all Cats and LNAV Cats A and B visibility to RVR 5500 and Cats C/D/E visibility to 1 3/8 miles. Circling NA west of Rwy 17R-35L.

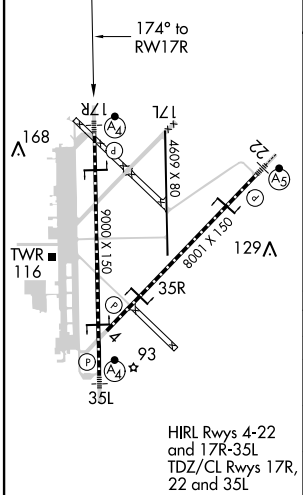
▲ MALSF MISSED APPROACH: Climb to 3100 direct AZTIB and on track 125° to WATFO and hold.

ATIS 135.575 269.9	HOUSTON APP CON 134.45 284.0	ELLINGTON TOWER 126.05 253.5	GND CON 121.6 275.8
------------------------------	--	--	-------------------------------

RADAR REQUIRED



ELEV 32	D	THRE 31
---------	----------	---------



VGSI and RNAV glidepath not coincident (VGSI Angle 3.00/TCH 48).

3100	AZTIB	tr 125°	WATFO
------	-------	---------	-------

**LNAV only*

ZORLU	TRAPS	FUJI			
2000	1700	3.5 NM to RWY 17R			
		*1.4 NM to RWY 17R			
			1.6 NM	2.2 NM	
			1.4 NM		
			7 NM		
GS 3.00°	TCH 52				
CATEGORY	A	B	C	D	E
LPV DA		231/40	200 (200-3/4)		
LNAV/VNAV DA		362/40	331 (400-3/4)		
LNAV MDA	500/40	469 (500-3/4)	500/60	469 (500-1/4)	
CIRCLING	500-1	468 (500-1)	500-1 1/2 468 (500-1 1/2)	600-2 568 (600-2)	660-2 1/4 628 (700-2 1/4)

SC-5, 07 FEB 2013 to 07 MAR 2013

SC-5, 07 FEB 2013 to 07 MAR 2013