

LEONA SEVEN DEPARTURE

SL-197 (FAA)

HOUSTON/ ELLINGTON (EFD)
HOUSTON, TEXAS

ATIS
135.575 269.9
GND CON
121.6 275.8
ELLINGTON TOWER
126.05 253.5
HOUSTON DEP CON
134.45 284.0

ARDMORE
116.7 ADM
Chan 114
N34°12.69' - W97°10.10'
L-17, H-6

TULSA
114.4 TUL
Chan 91
N36°11.78' - W95°47.29'
L-15, H-6

BONHAM
114.6 BYP
Chan 93
N33°32.25' - W96°14.05'
L-17, H-6

RANGER
115.7 FUZ
Chan 104
N32°53.37' - W97°10.77'
L-17, H-6

DOLEY
N32°11.35'
W96°23.08'

CEDAR CREEK
114.8 CQY
Chan 95
N32°11.14' - W96°13.09'

WACO
115.3 ACT
Chan 100
N31°39.74' - W97°16.14'
L-19, H-6

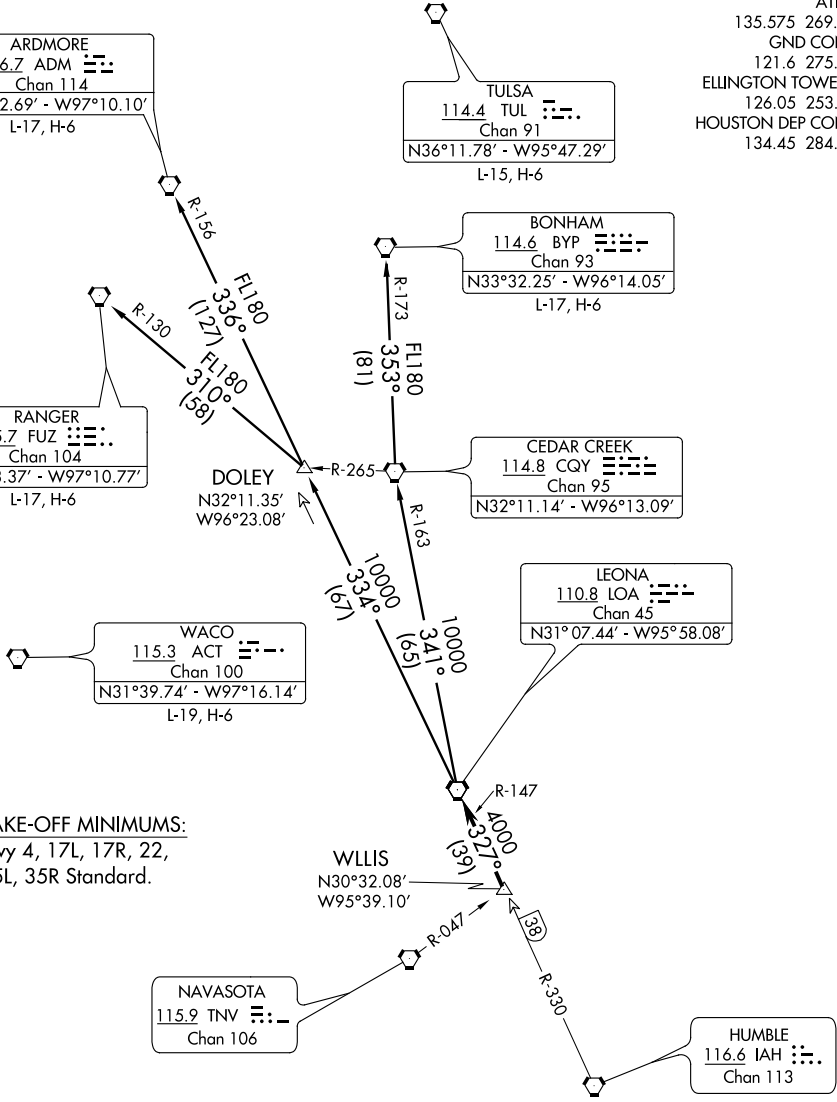
LEONA
110.8 LOA
Chan 45
N31°07.44' - W95°58.08'

TAKE-OFF MINIMUMS:
Rwy 4, 17L, 17R, 22,
35L, 35R Standard.

WLLIS
N30°32.08'
W95°39.10'

NAVASOTA
115.9 TNV
Chan 106

HUMBLE
116.6 IAH
Chan 113



SC-5, 07 FEB 2013 to 07 MAR 2013

SC-5, 07 FEB 2013 to 07 MAR 2013

NOTE: RADAR Required.

NOTE: Chart not to scale.

(NARRATIVE ON FOLLOWING PAGE)

