

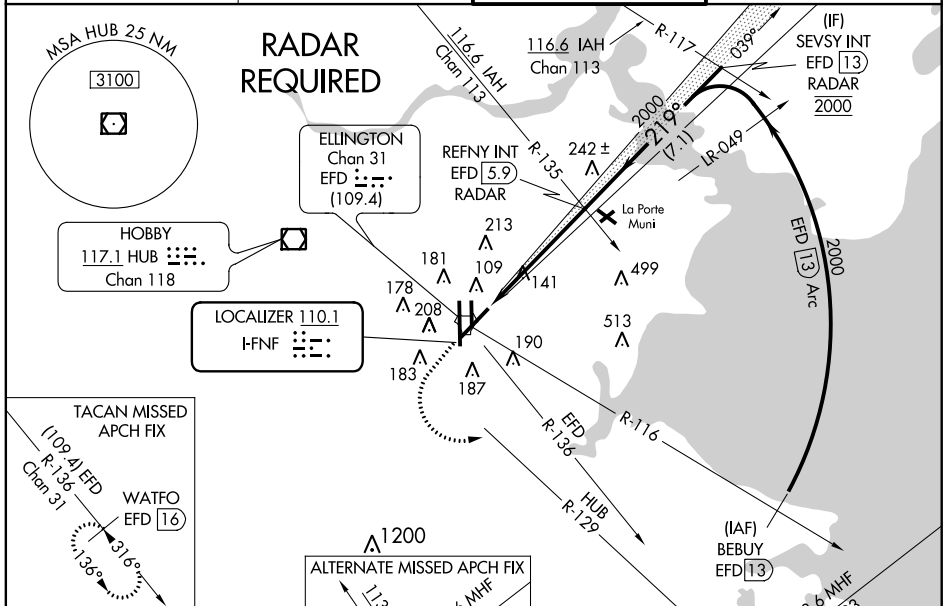
LOC I-FNF 110.1	APP CRS 219°	Rwy Idg THRE Apt Elev	8001 30 32
---------------------------	------------------------	-----------------------------	---------------------------------------

ILS or LOC RWY 22

HOUSTON/ELLINGTON (EFD)

<p>NA For inoperative MALS, increase S-ILS 22 Cat E visibility to RVR 4000 and S-LOC 22 Cat E visibility to RVR 6000. Circling NA west of Rwy 17R-35L.</p>	<p>MALS</p>	<p>MISSED APPROACH: Climb to 700 then climbing left turn to 3100 on HUB VOR/DME R-129 to WATFO INT and hold. (TACAN aircraft climb to 700 then climbing left turn to 3100 on EFD TACAN R-136 to WATFO/EFD 16 DME and hold southeast, left turn, 316° inbound.)</p>
---	--------------------	---

<p>ATIS 135.575 269.9</p>	<p>HOUSTON APP CON 134.45 284.0</p>	<p>ELLINGTON TOWER 126.05 253.5</p>	<p>GND CON 121.6 275.8</p>
--------------------------------------	--	--	---------------------------------------



ELEV 32	D	THRE 30
---------	----------	---------

219° 5 NM from FAF

17R

17L

4607 X 80

22

9000 X 150

129A

35R

35L

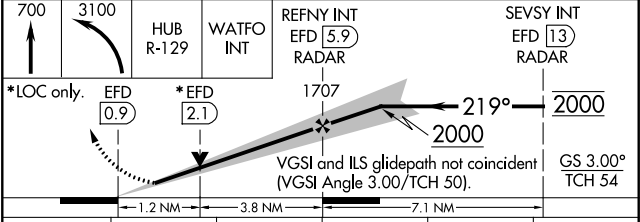
93

35L HIRL Rwy 4-22 and 17R-35L TDZ/CL Rwy 17R, 22 and 35L

FAF to MAP 5 NM

Knots 60 90 120 150 180

Min:Sec 5:00 3:20 2:30 2:00 1:40



CATEGORY	A	B	C	D	E
S-ILS 22	230/18		200 (200-½)		230/24 200 (200-½)
S-LOC 22	460/24	430 (500-½)	460/40		430 (500-¾)
CIRCLING	500-1	468 (500-1)	500-1½ 468 (500-1½)	600-2 568 (600-2)	660-2¼ 628 (700-2¼)

SC-5, 07 FEB 2013 to 07 MAR 2013

SC-5, 07 FEB 2013 to 07 MAR 2013