

HI-ILS or LOC/DME RWY 35L

LOC I-EFD 111.1	APCH CRS 354°	Rwy Idg THRE Arpt Elev 9000 28 33
---------------------------	-------------------------	---

JAL-197 [USAF]

HOUSTON/ELLINGTON (KEFD)

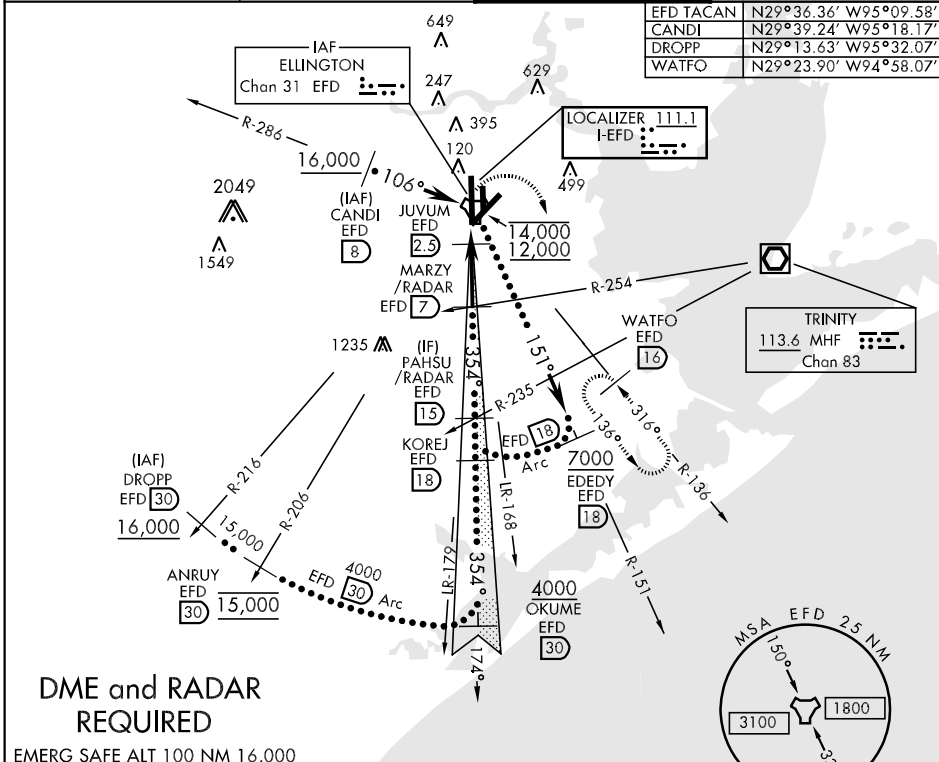
* When ALS inop, increase CAT CDE RVR to 60, vis to 1 1/8 mile.
 ** Circling not authorized W of rwy 17L-35R



MISSED APPROACH: Climb to 500 then climbing right turn to 3100 via EFD R-136 to WATFO INT/EFD 16 DME and hold.

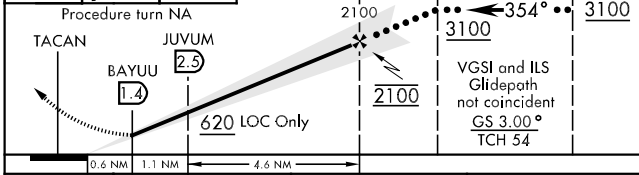
ATIS 135.575 269.9	HOUSTON APP CON 134.45 284.0	ELLINGTON TOWER 126.05 253.5	GND CON 121.6 275.8
------------------------------	--	--	-------------------------------

EFD TACAN	N29°36.36' W95°09.58'
CANDI	N29°39.24' W95°18.17'
DROPP	N29°13.63' W95°32.07'
WATFO	N29°23.90' W94°58.07'

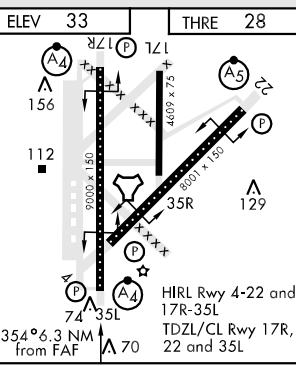


DME and RADAR REQUIRED

EMERG SAFE ALT 100 NM 16,000



CATEGORY	C	D	E
S-ILS 35L	228/40	200	(200-3/4)
S-LOC 35L *	440/50	412	(500-1)
CIRCLING **	500-1 1/2 467 (500-1 1/2)	600-2 567 (600-2)	660-2 1/4 627 (700-2 1/4)



HI-ILS or LOC/DME RWY 35L

SC-5, 07 FEB 2013 to 07 MAR 2013

SC-5, 07 FEB 2013 to 07 MAR 2013